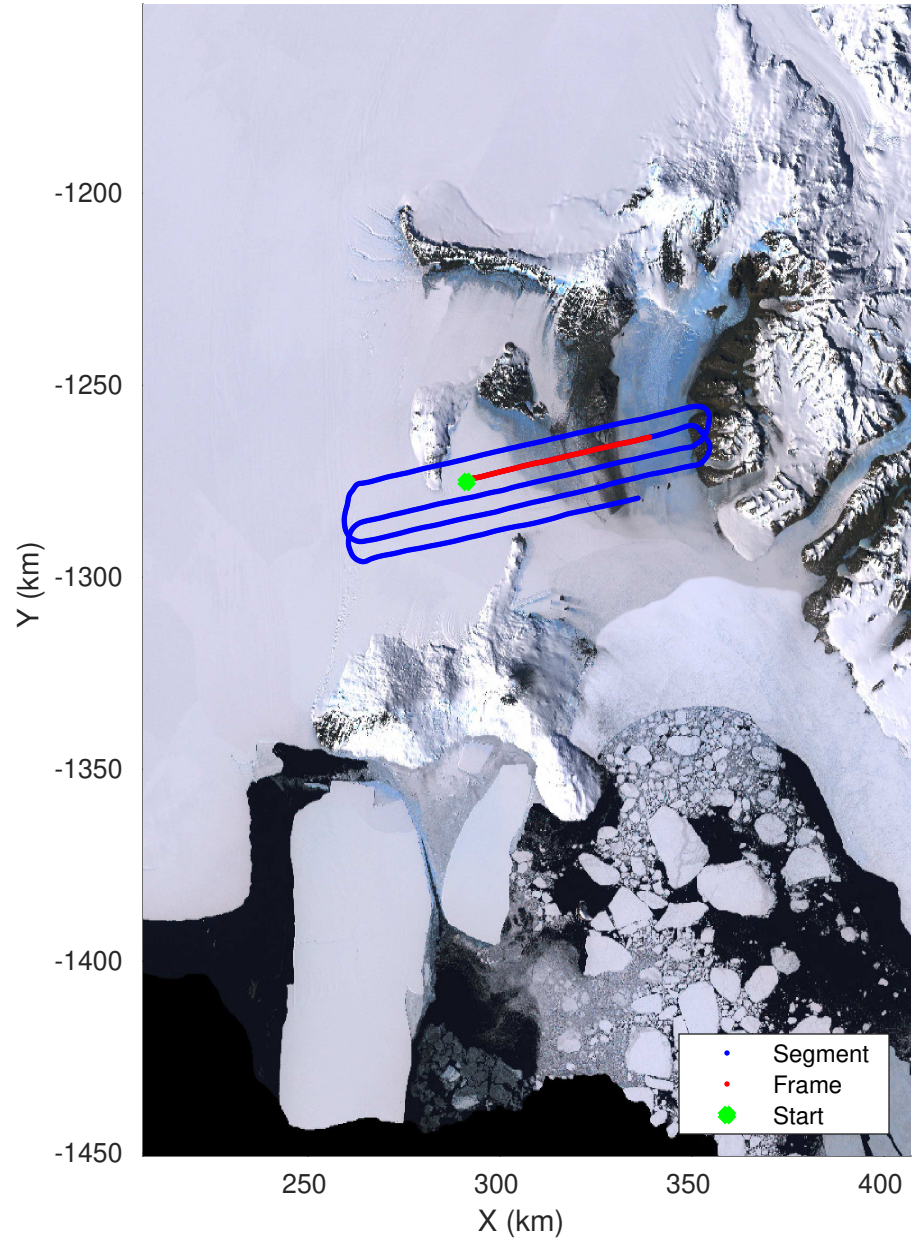
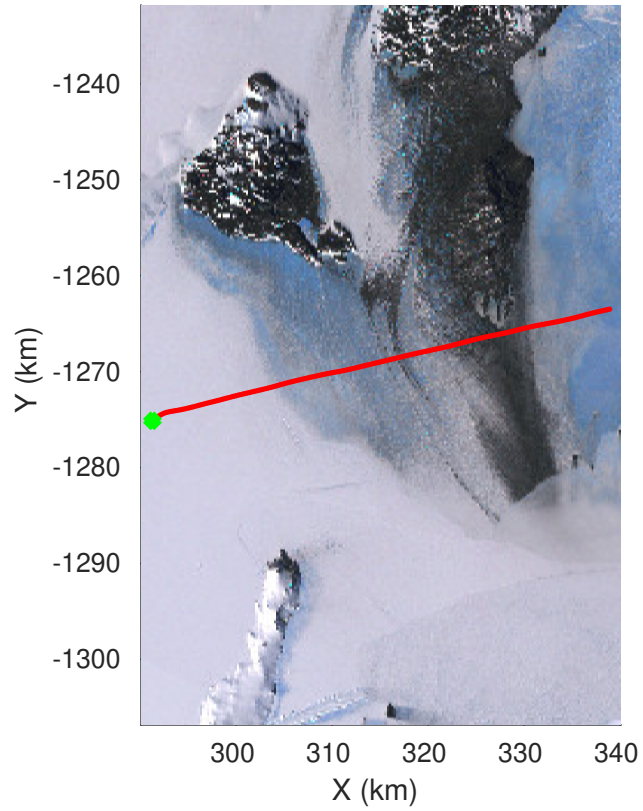


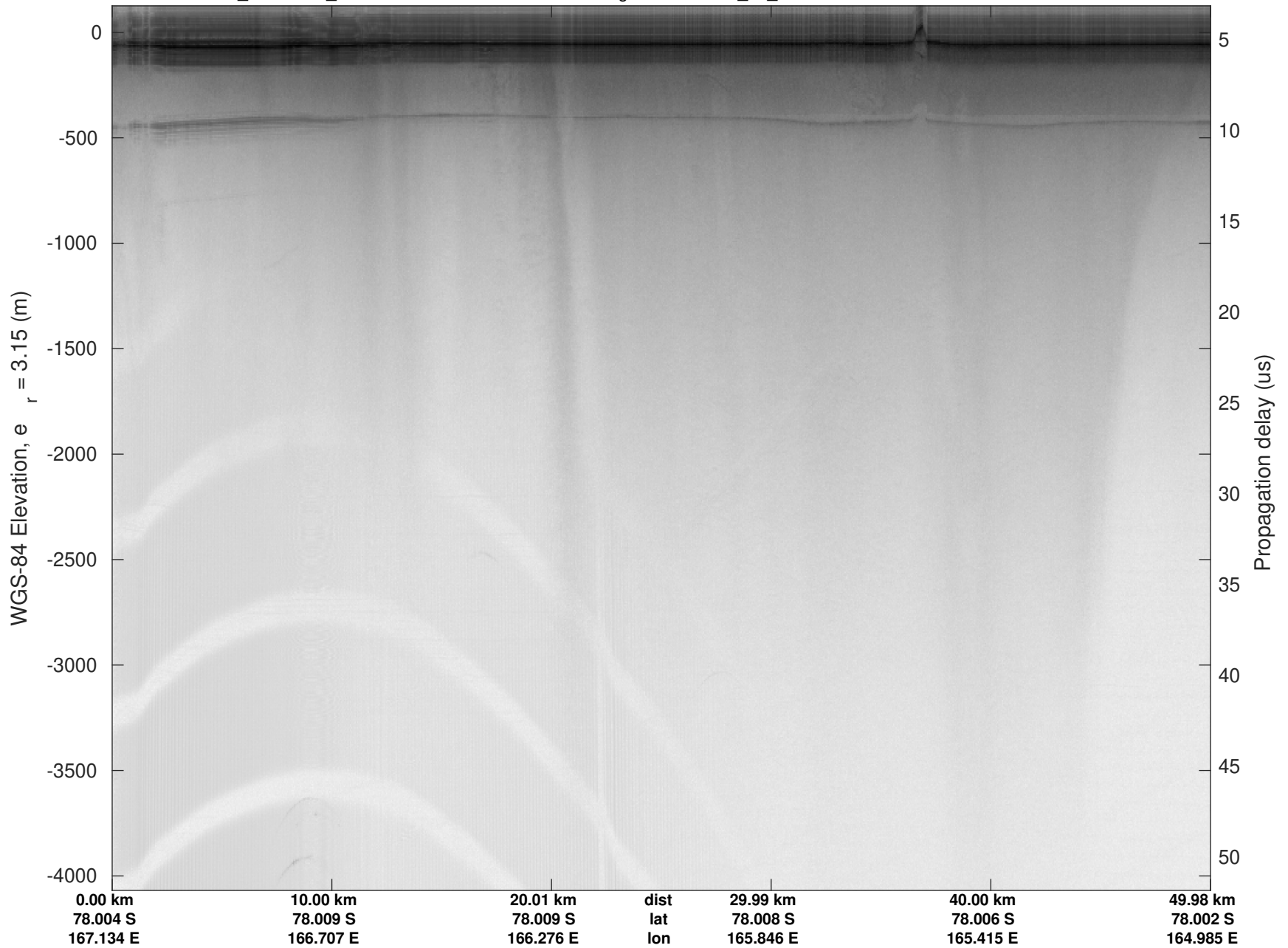
F03: McMurdo Test Flight
 20221213_01_001
 Polar Stereograph -71N/0E



- Segment
- Frame
- Start

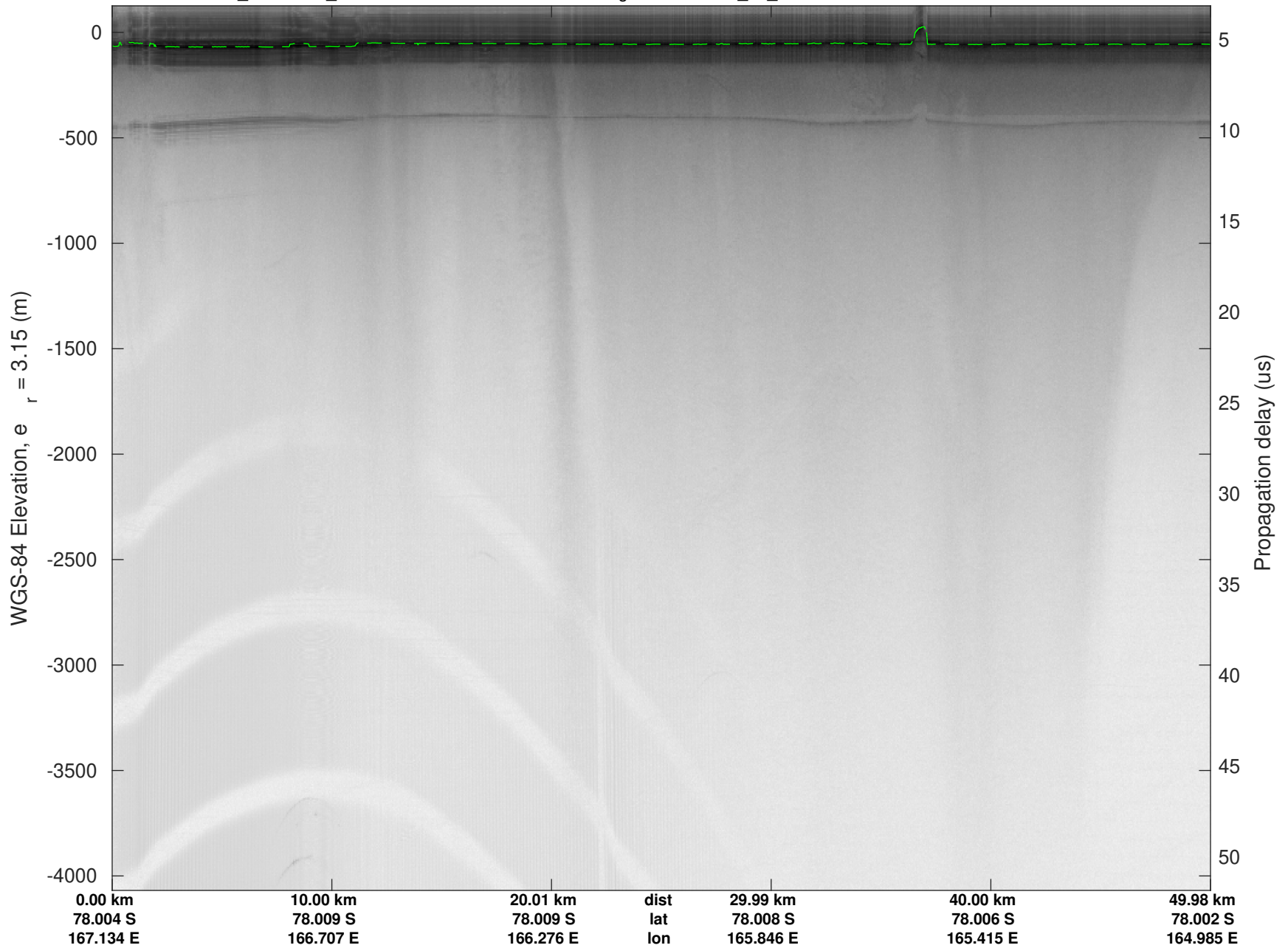
UTIG MARFA -- COLDEX

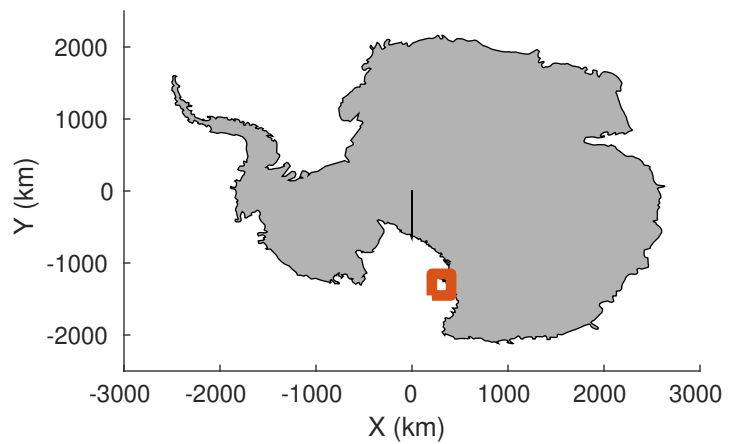
rds 2022_Antarctica_BaslerMKB: "F03: McMurdo Test Flight" 20221213_01_001: 00:57:28.8 to 01:08:24.8 GPS



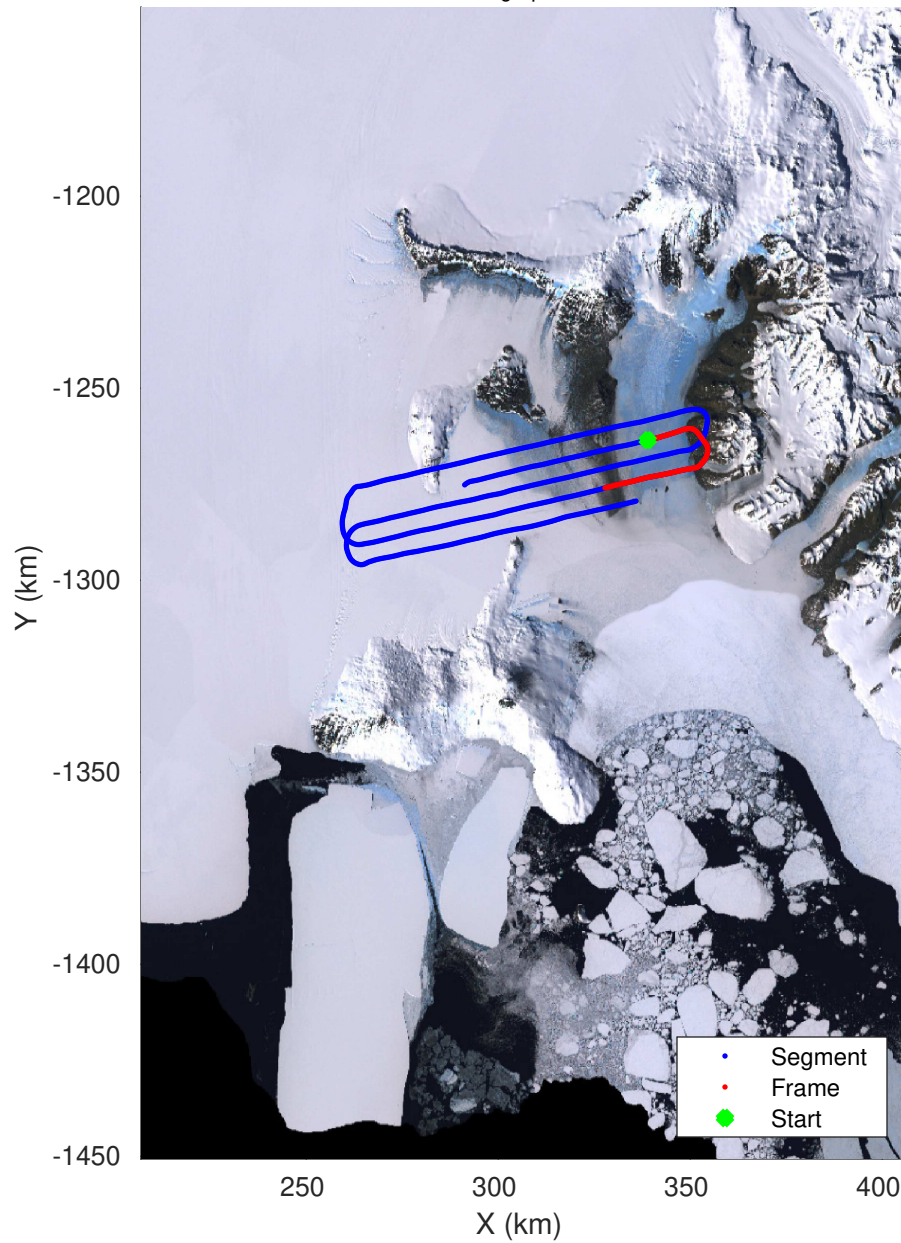
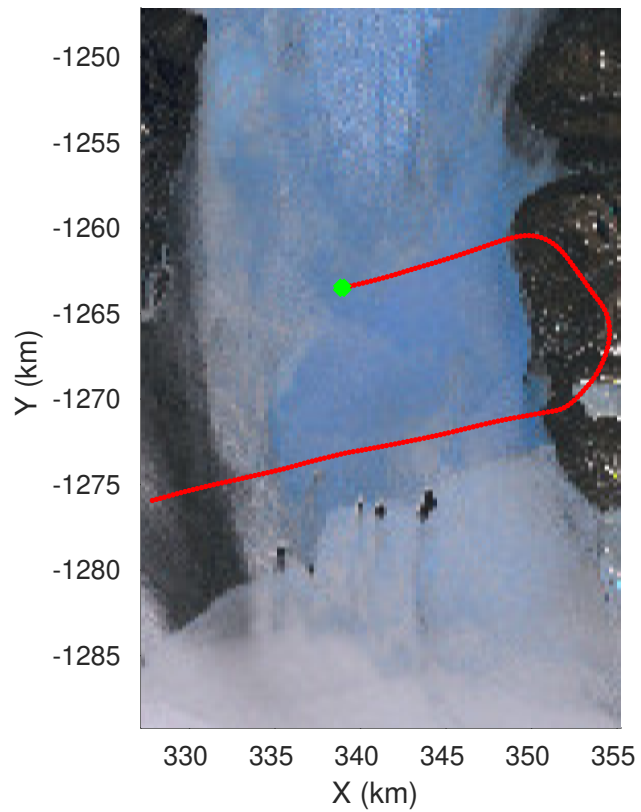
UTIG MARFA -- COLDEX

rds 2022_Antarctica_BaslerMKB: "F03: McMurdo Test Flight" 20221213_01_001: 00:57:28.8 to 01:08:24.8 GPS



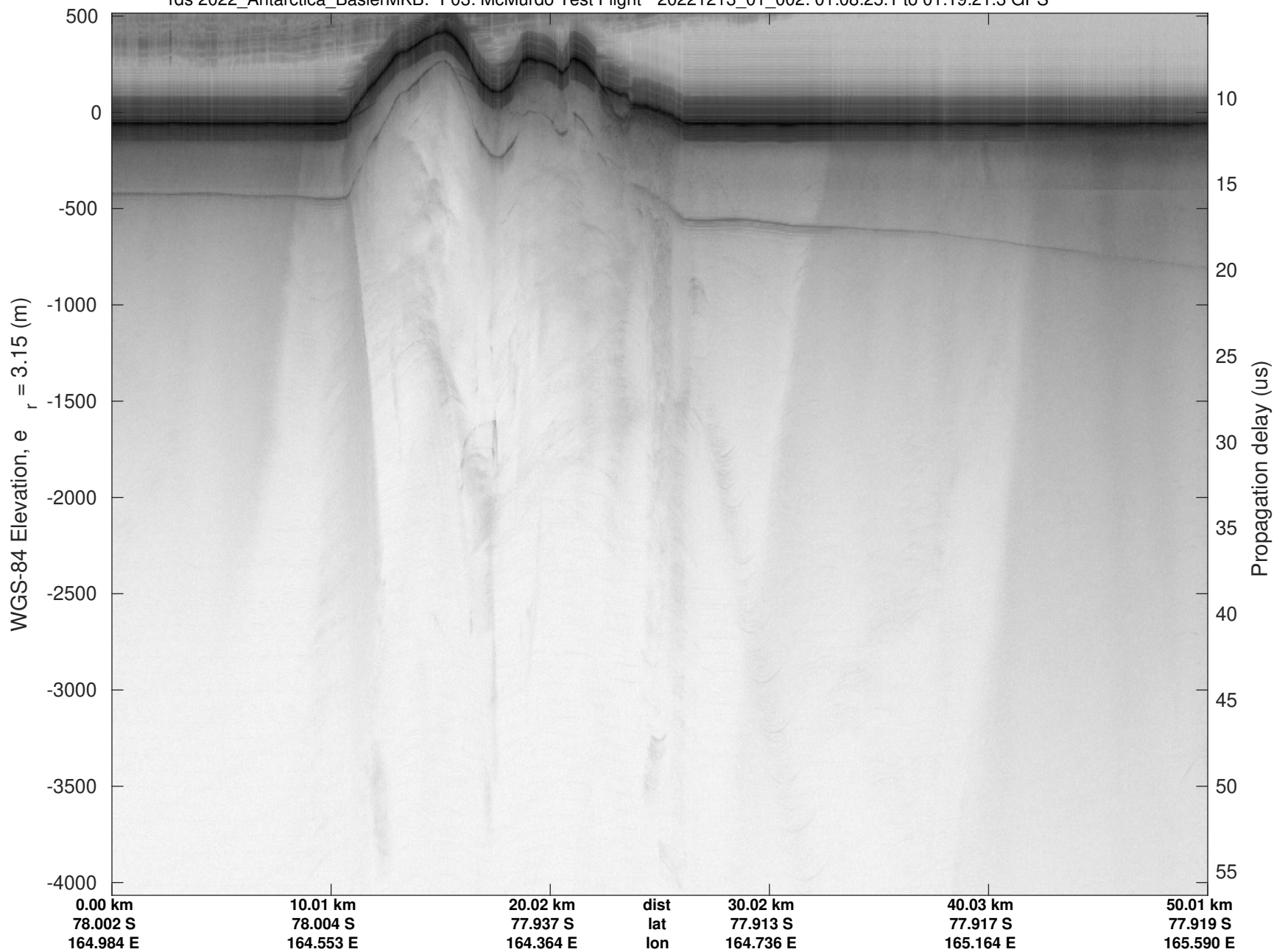


F03: McMurdo Test Flight
 20221213_01_002
 Polar Stereograph -71N/0E



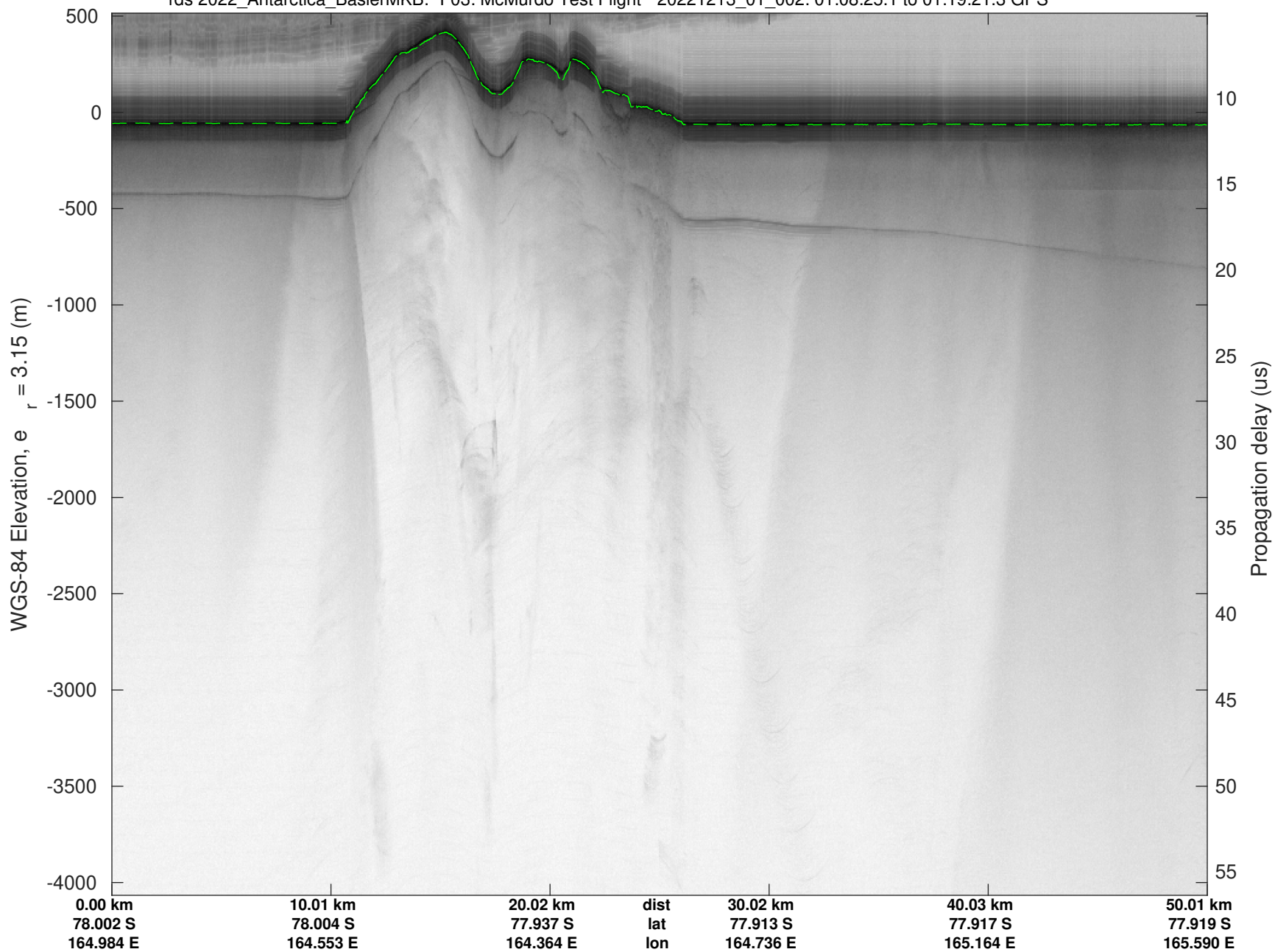
UTIG MARFA -- COLDEX

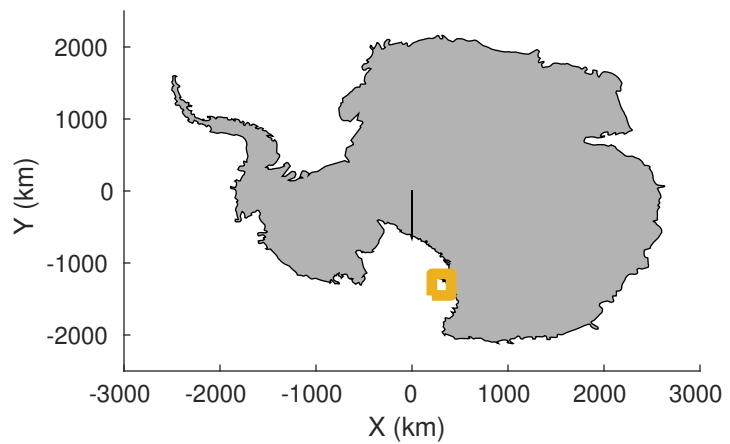
rds 2022_Antarctica_BaslerMKB: "F03: McMurdo Test Flight" 20221213_01_002: 01:08:25.1 to 01:19:21.3 GPS



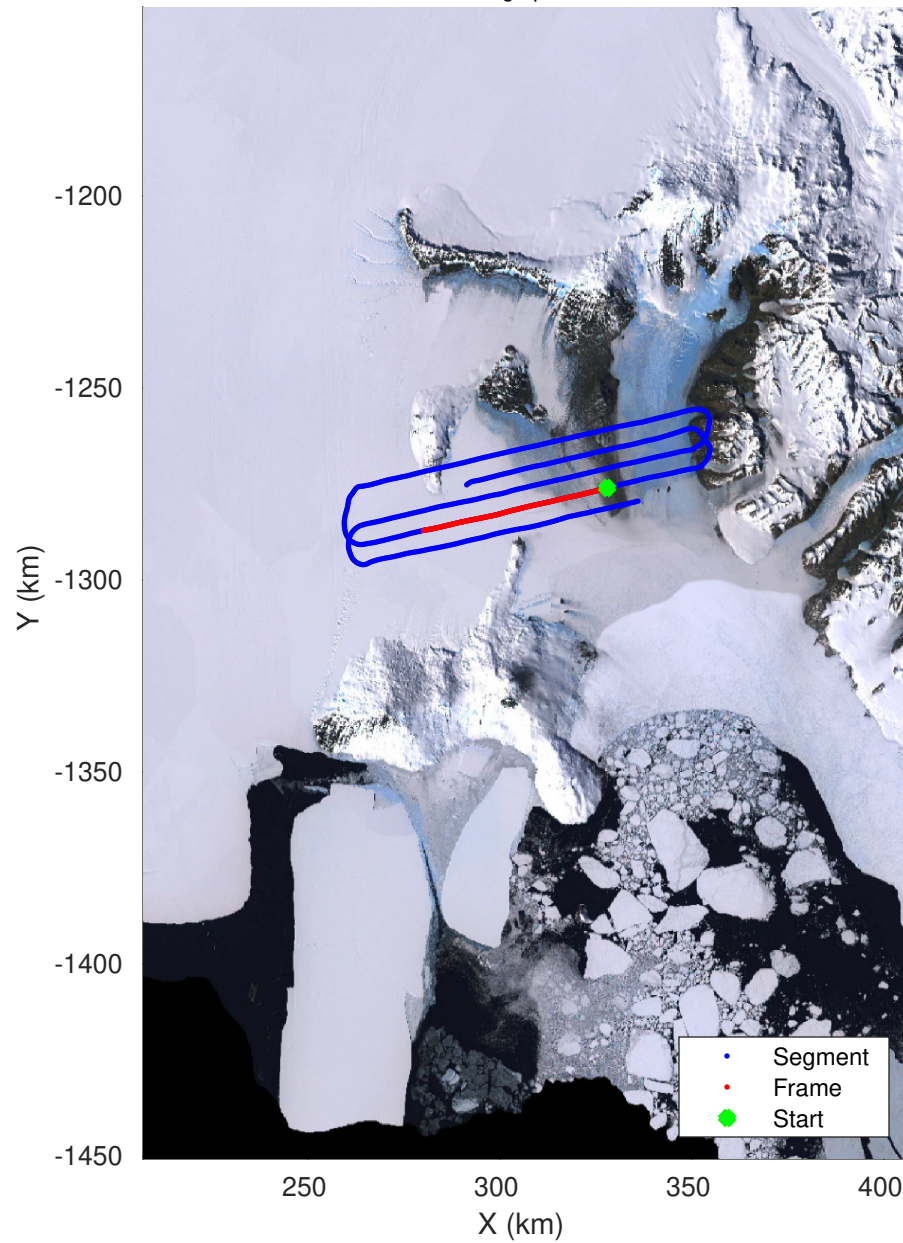
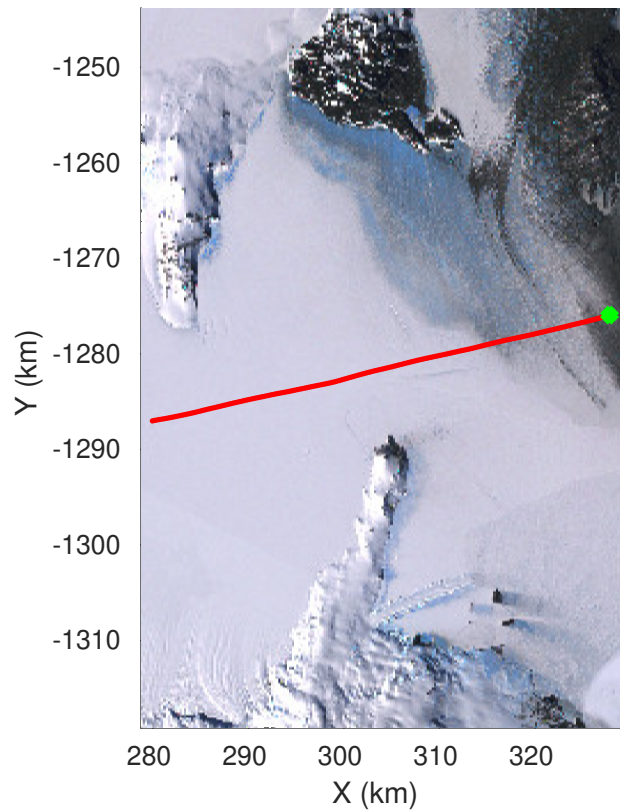
UTIG MARFA -- COLDEX

rds 2022_Antarctica_BaslerMKB: "F03: McMurdo Test Flight" 20221213_01_002: 01:08:25.1 to 01:19:21.3 GPS



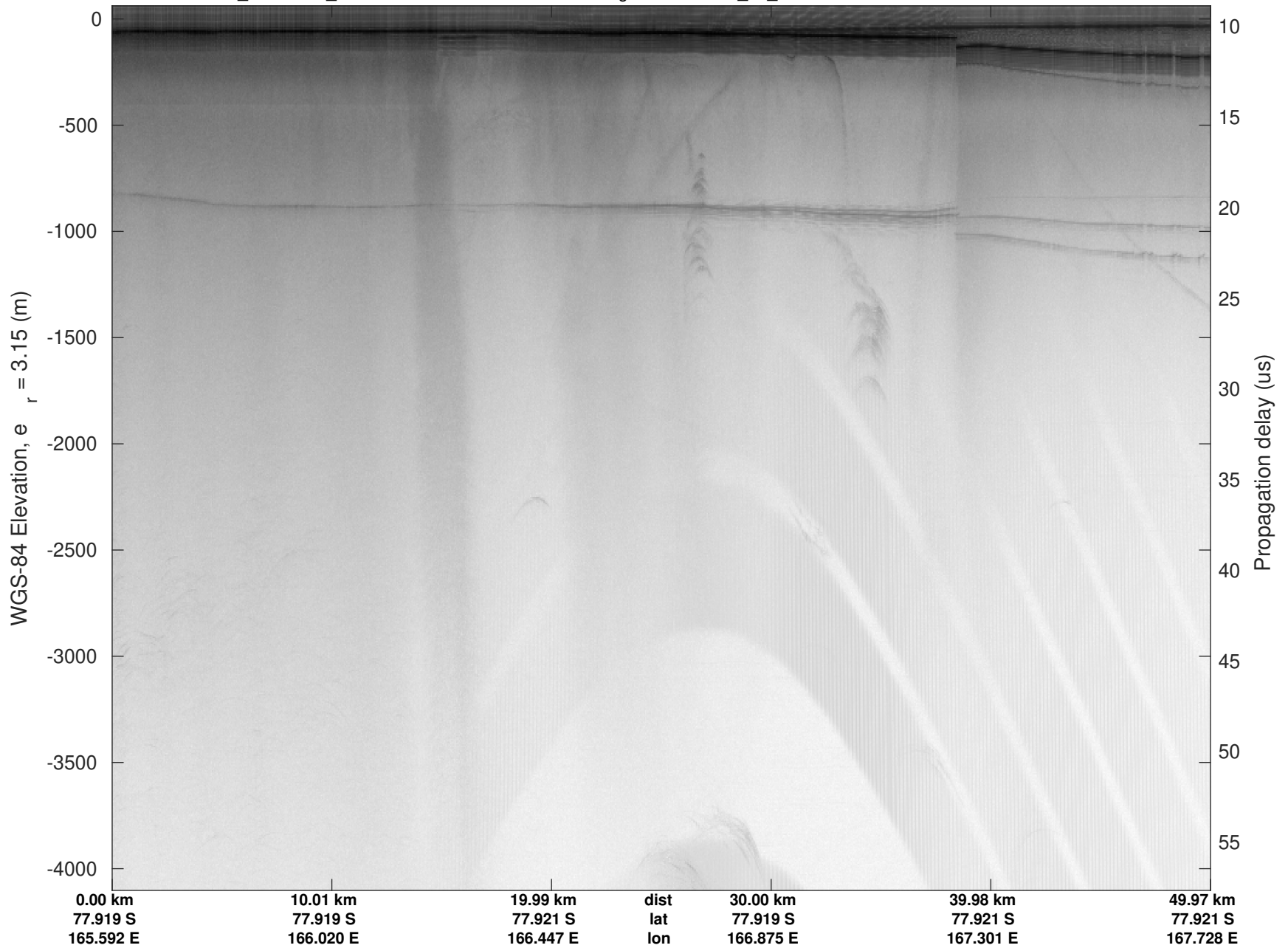


F03: McMurdo Test Flight
 20221213_01_003
 Polar Stereograph -71N/0E



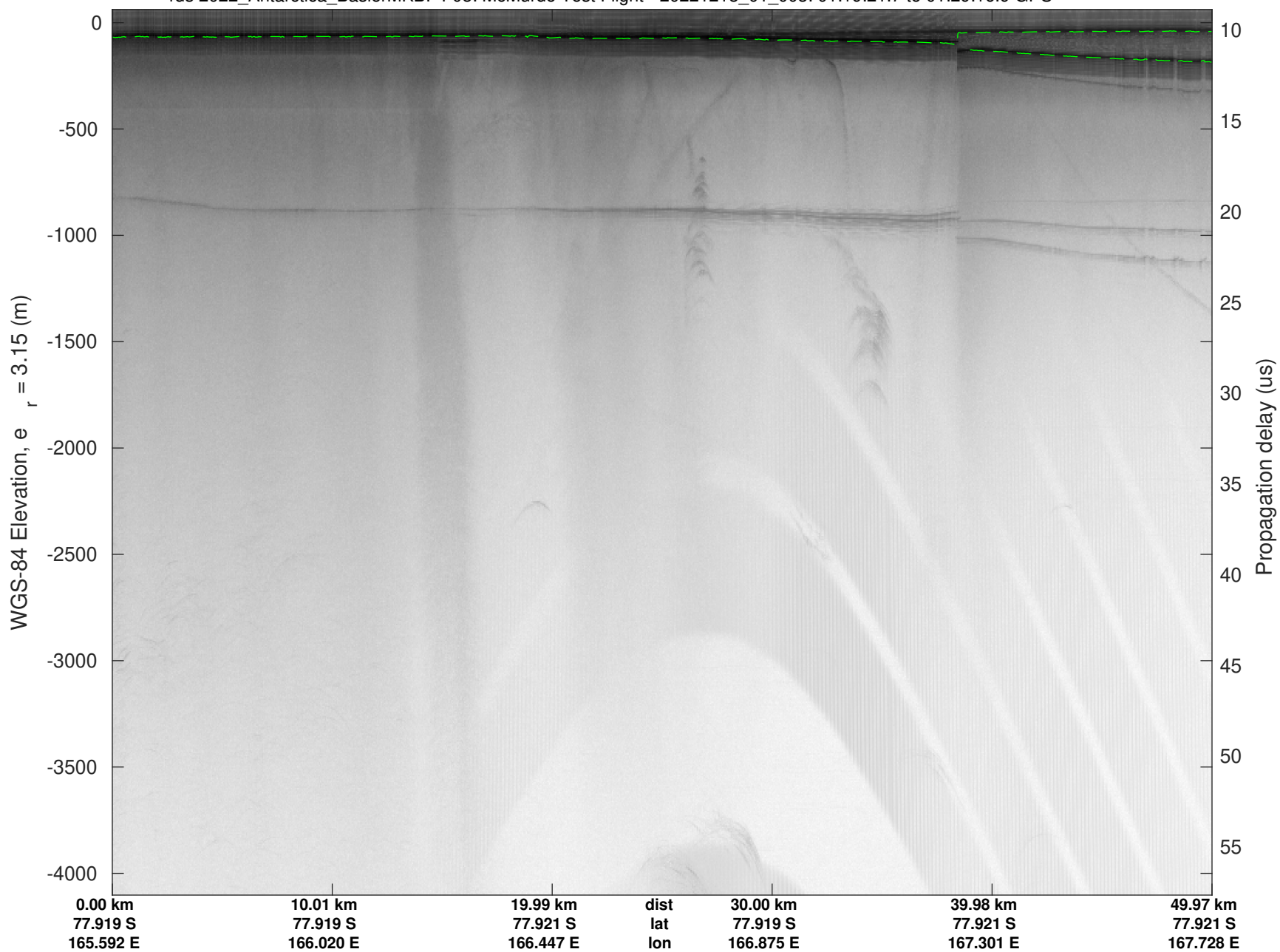
UTIG MARFA -- COLDEX

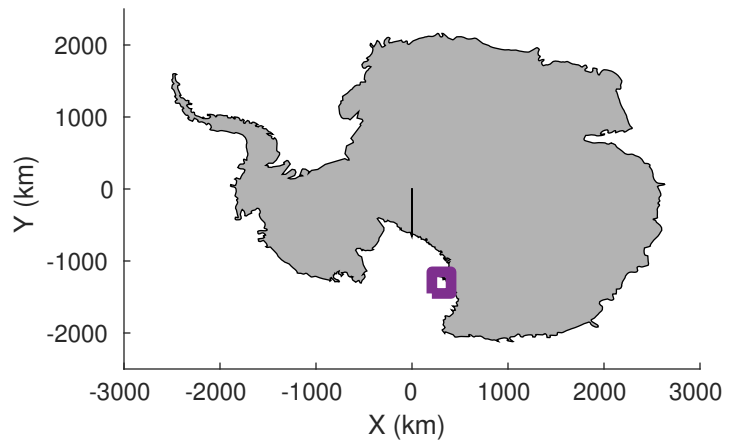
rds 2022_Antarctica_BaslerMKB: "F03: McMurdo Test Flight" 20221213_01_003: 01:19:21.7 to 01:29:16.9 GPS



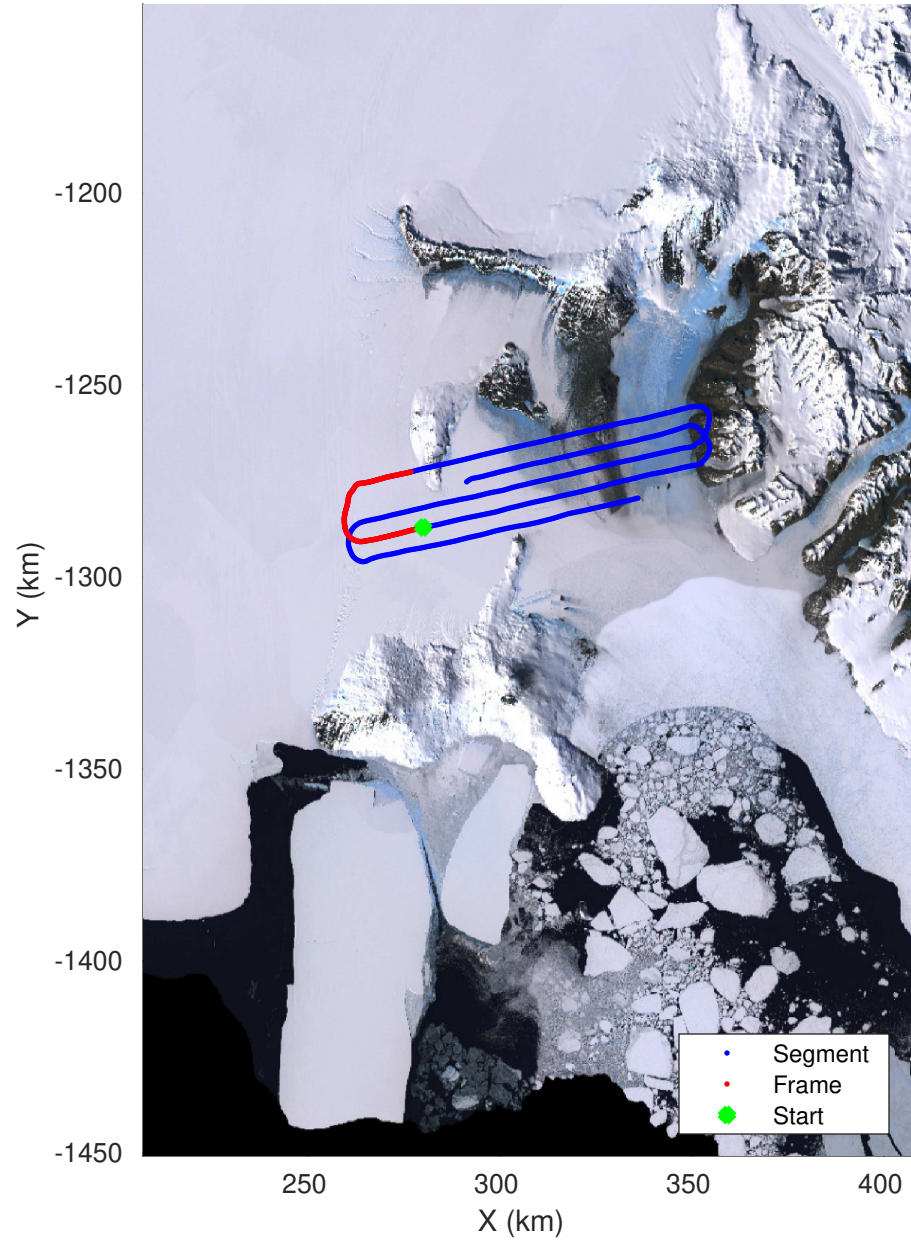
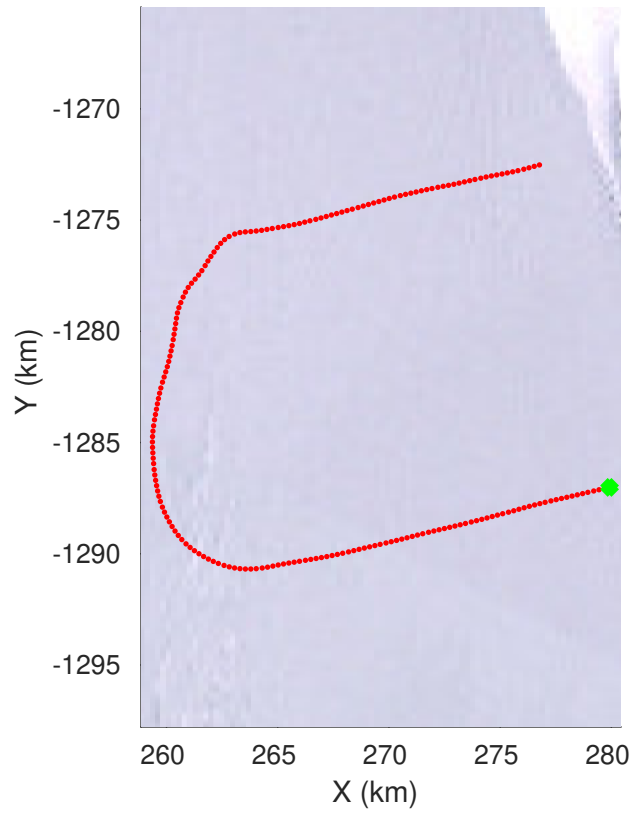
UTIG MARFA -- COLDEX

rds 2022_Antarctica_BaslerMKB: "F03: McMurdo Test Flight" 20221213_01_003: 01:19:21.7 to 01:29:16.9 GPS





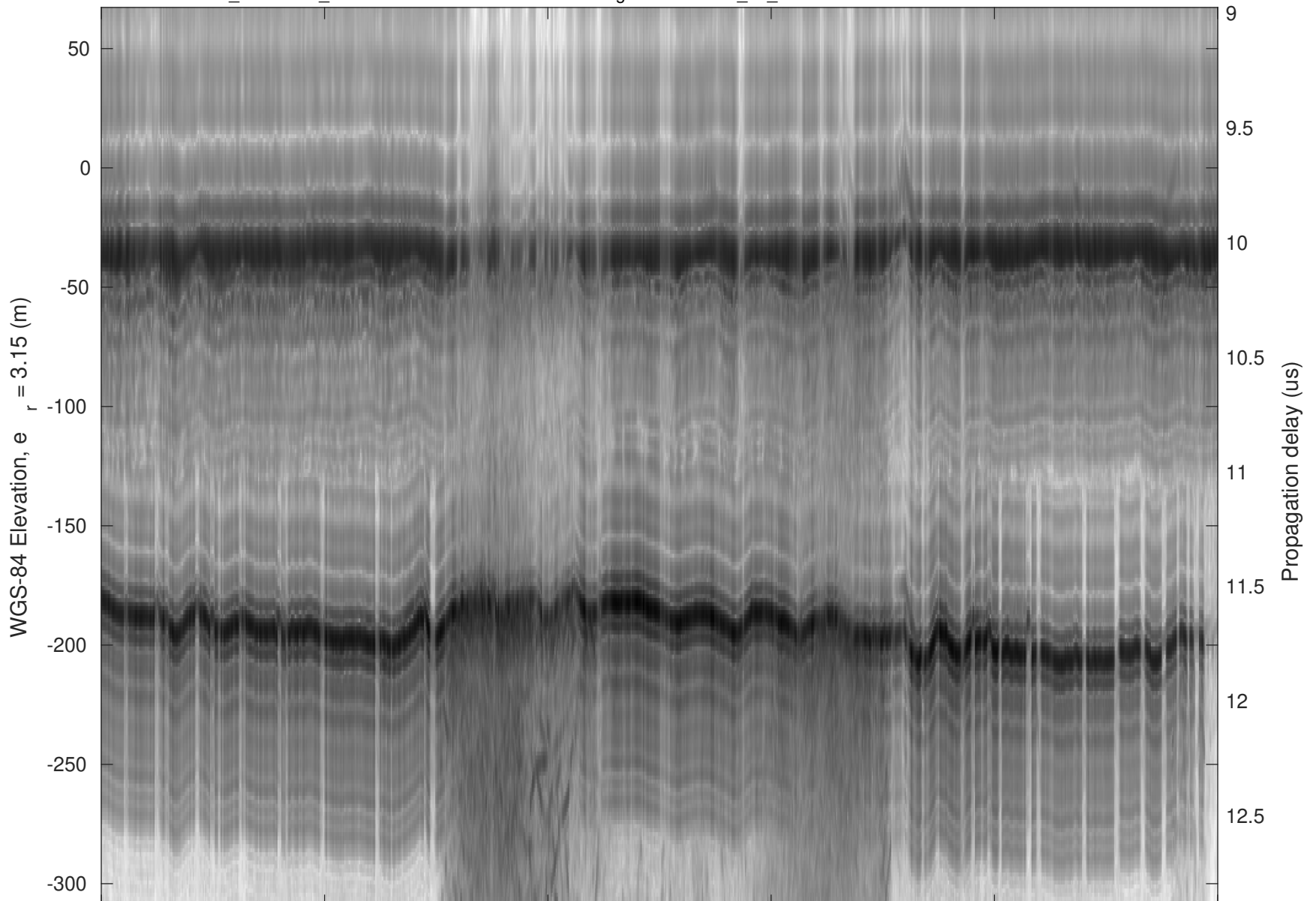
F03: McMurdo Test Flight
 20221213_01_004
 Polar Stereograph -71N/0E



- Segment
- Frame
- ◆ Start

UTIG MARFA -- COLDEX

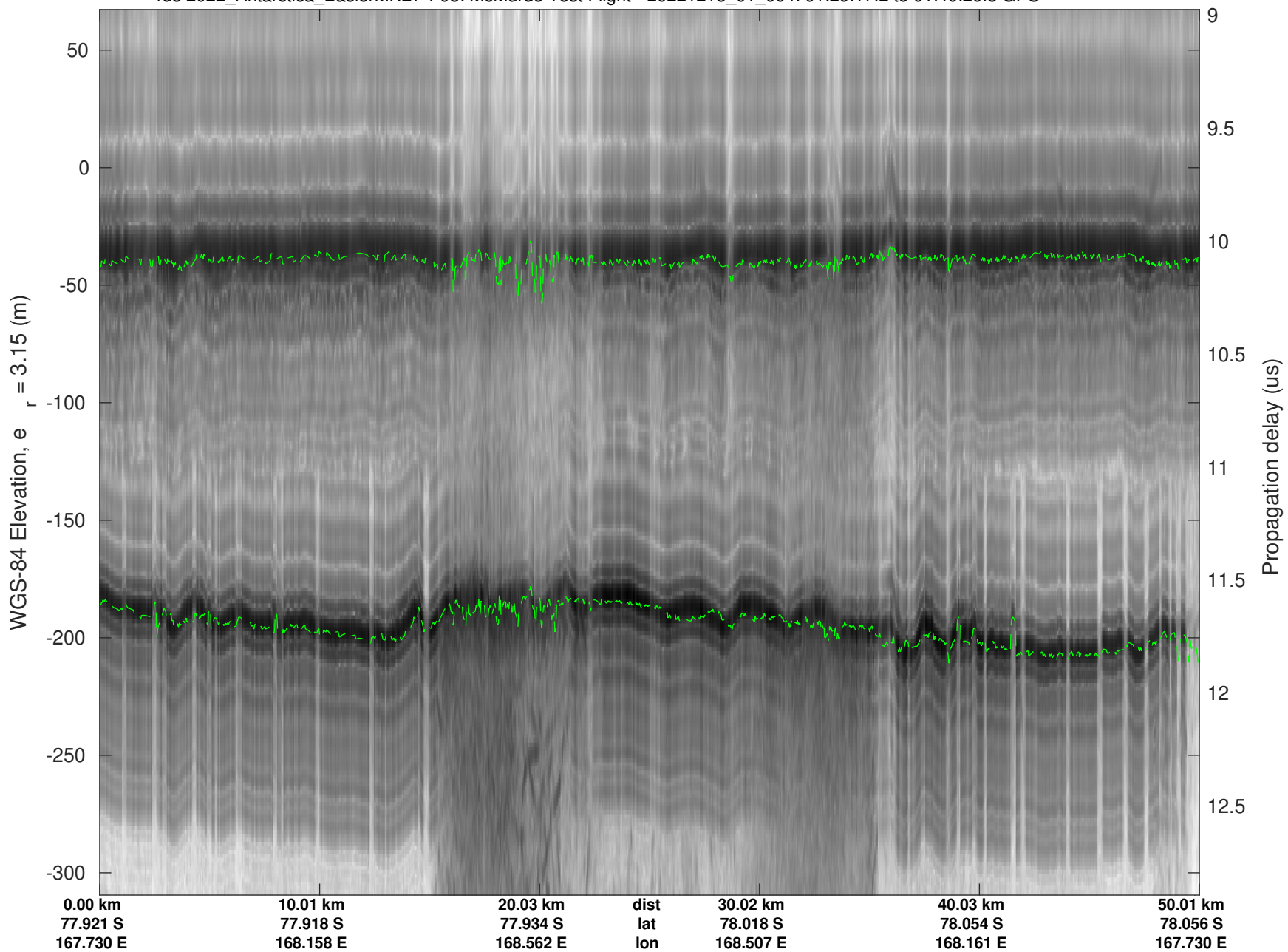
rds 2022_Antarctica_BaslerMKB: "F03: McMurdo Test Flight" 20221213_01_004: 01:29:17.2 to 01:40:20.8 GPS

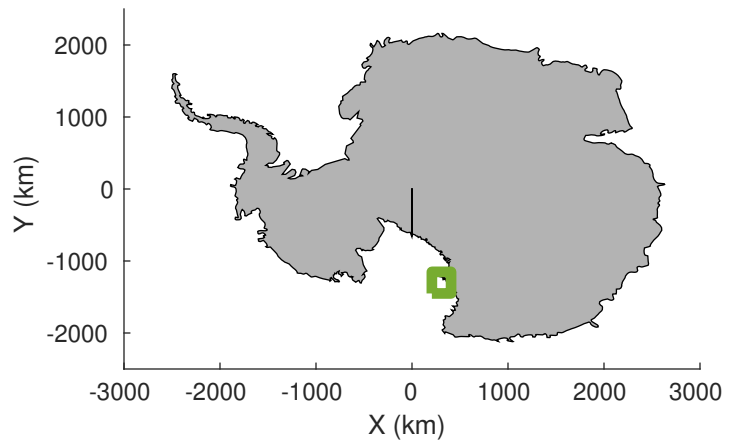


0.00 km	10.01 km	20.03 km	dist	30.02 km	40.03 km	50.01 km
77.921 S	77.918 S	77.934 S	lat	78.018 S	78.054 S	78.056 S
167.730 E	168.158 E	168.562 E	lon	168.507 E	168.161 E	167.730 E

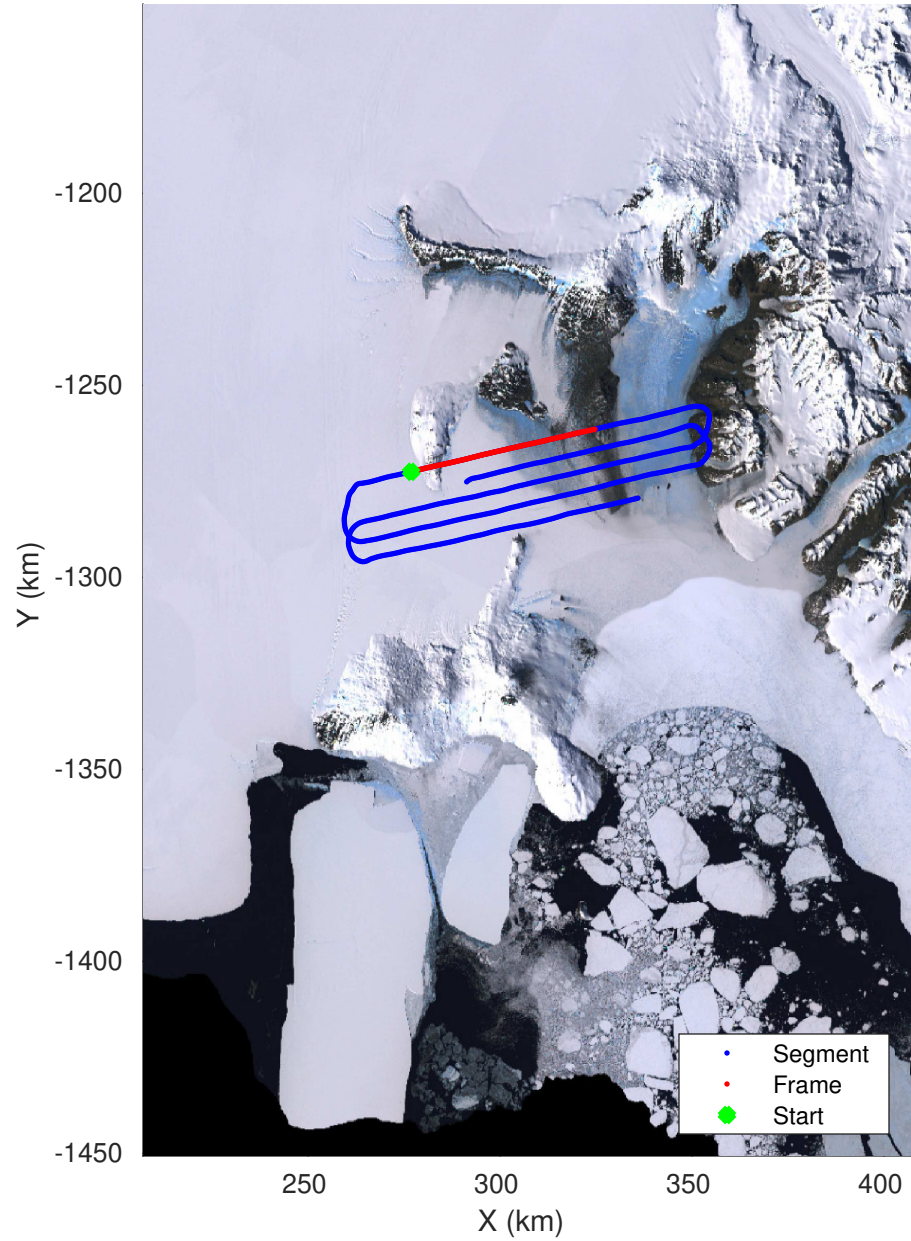
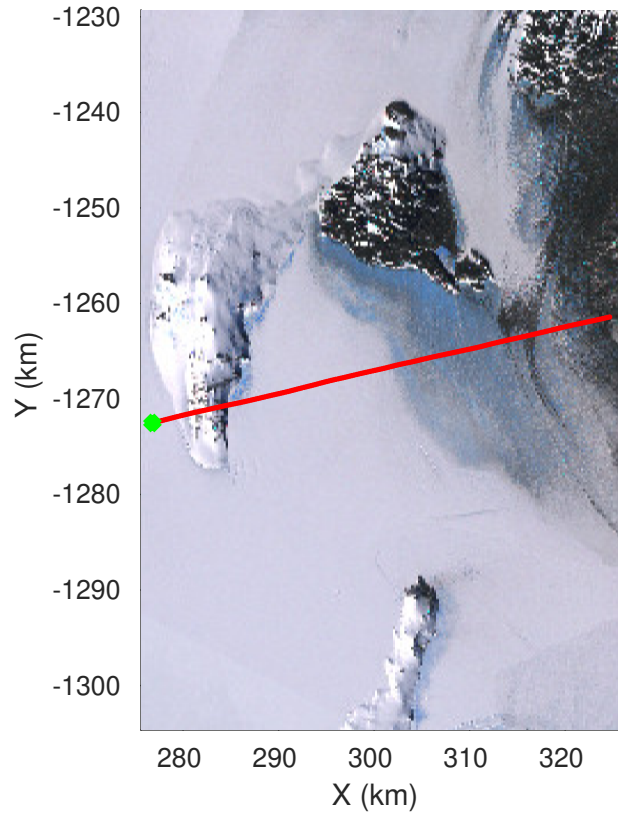
UTIG MARFA -- COLDEX

rds 2022_Antarctica_BaslerMKB: "F03: McMurdo Test Flight" 20221213_01_004: 01:29:17.2 to 01:40:20.8 GPS



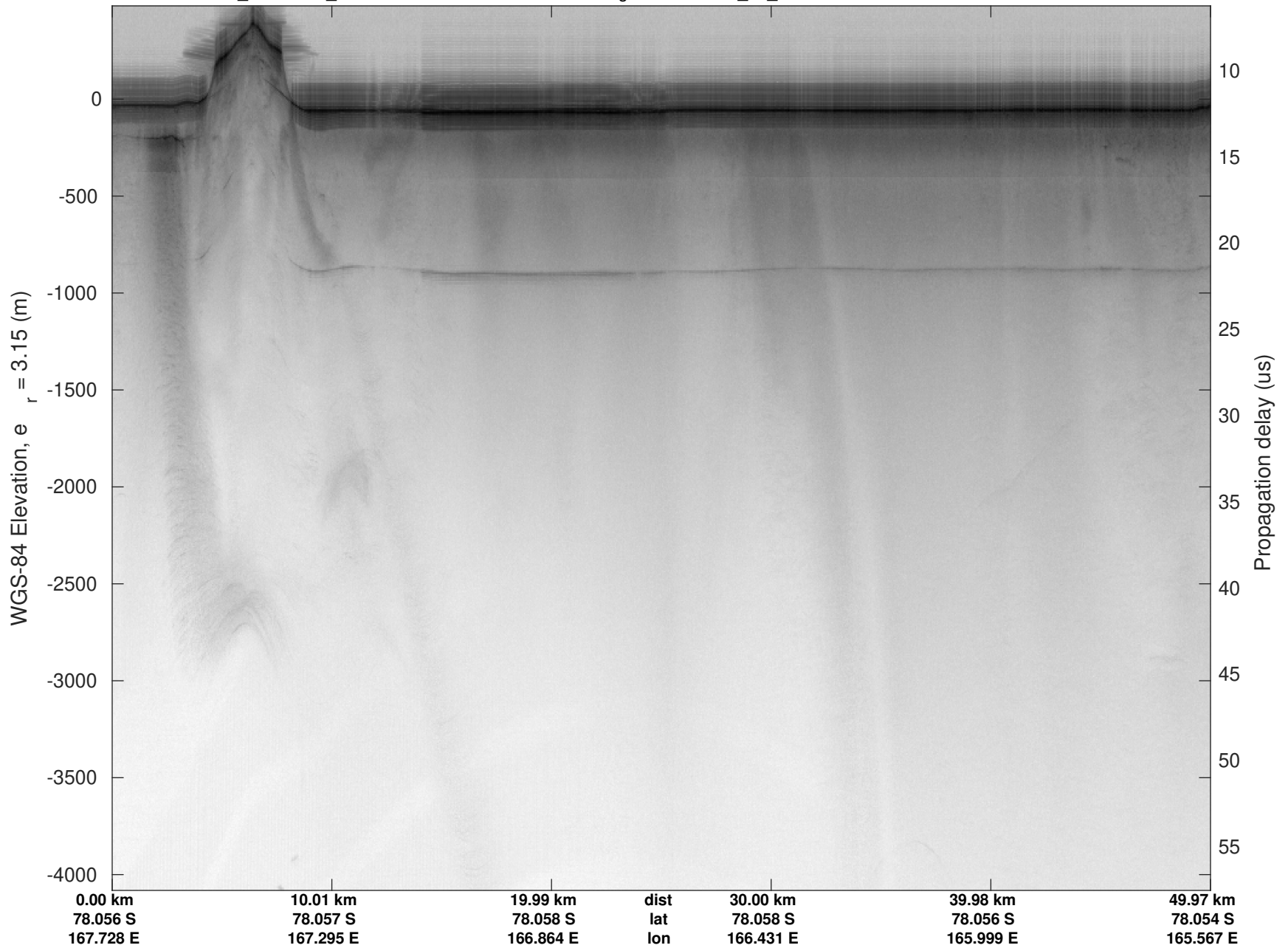


F03: McMurdo Test Flight
20221213_01_005
Polar Stereograph -71N/0E



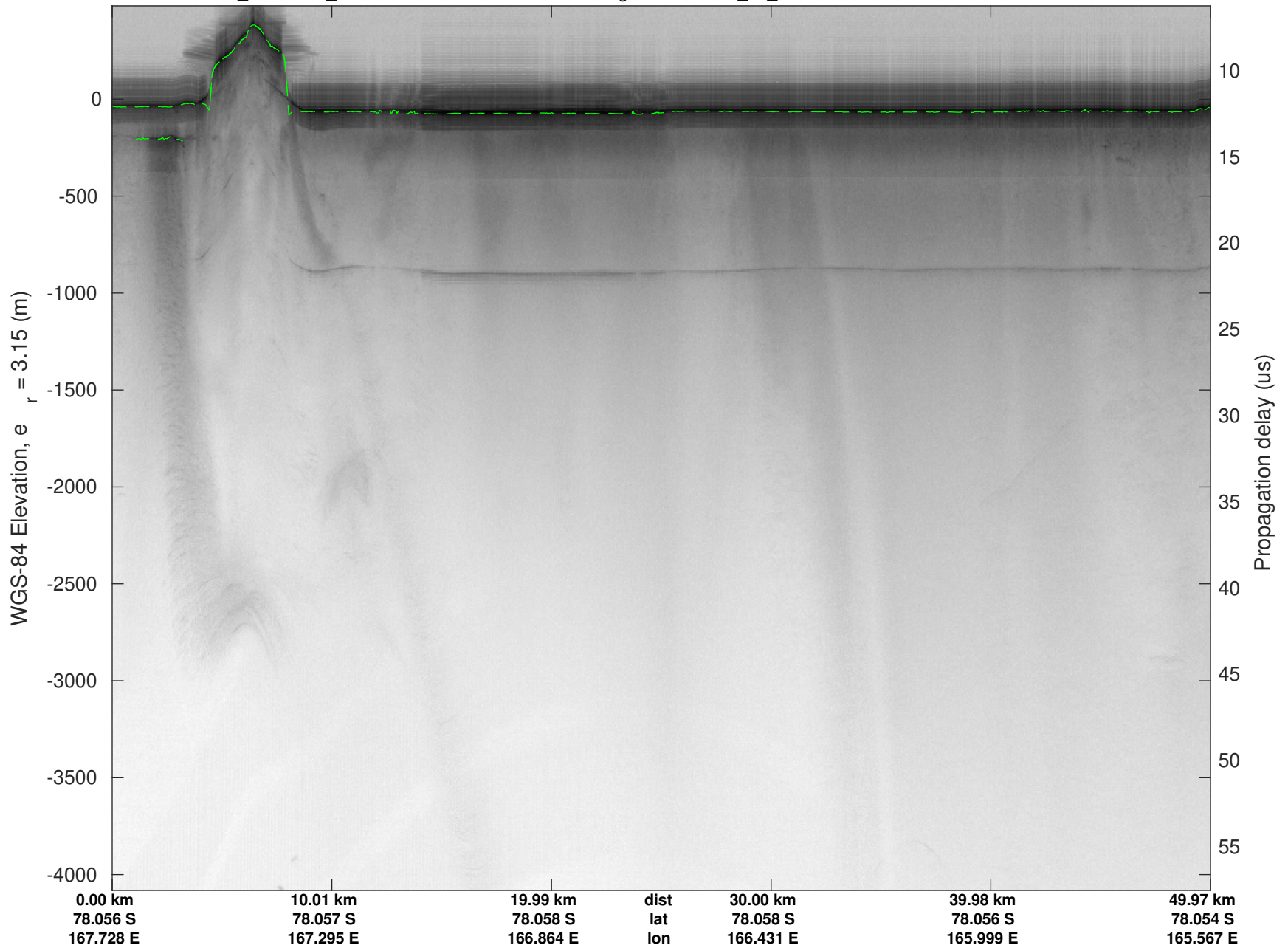
UTIG MARFA -- COLDEX

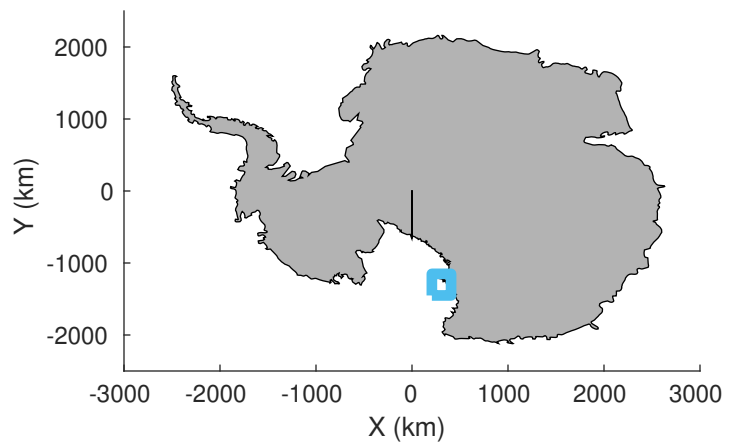
rds 2022_Antarctica_BaslerMKB: "F03: McMurdo Test Flight" 20221213_01_005: 01:40:21.2 to 01:51:02.8 GPS



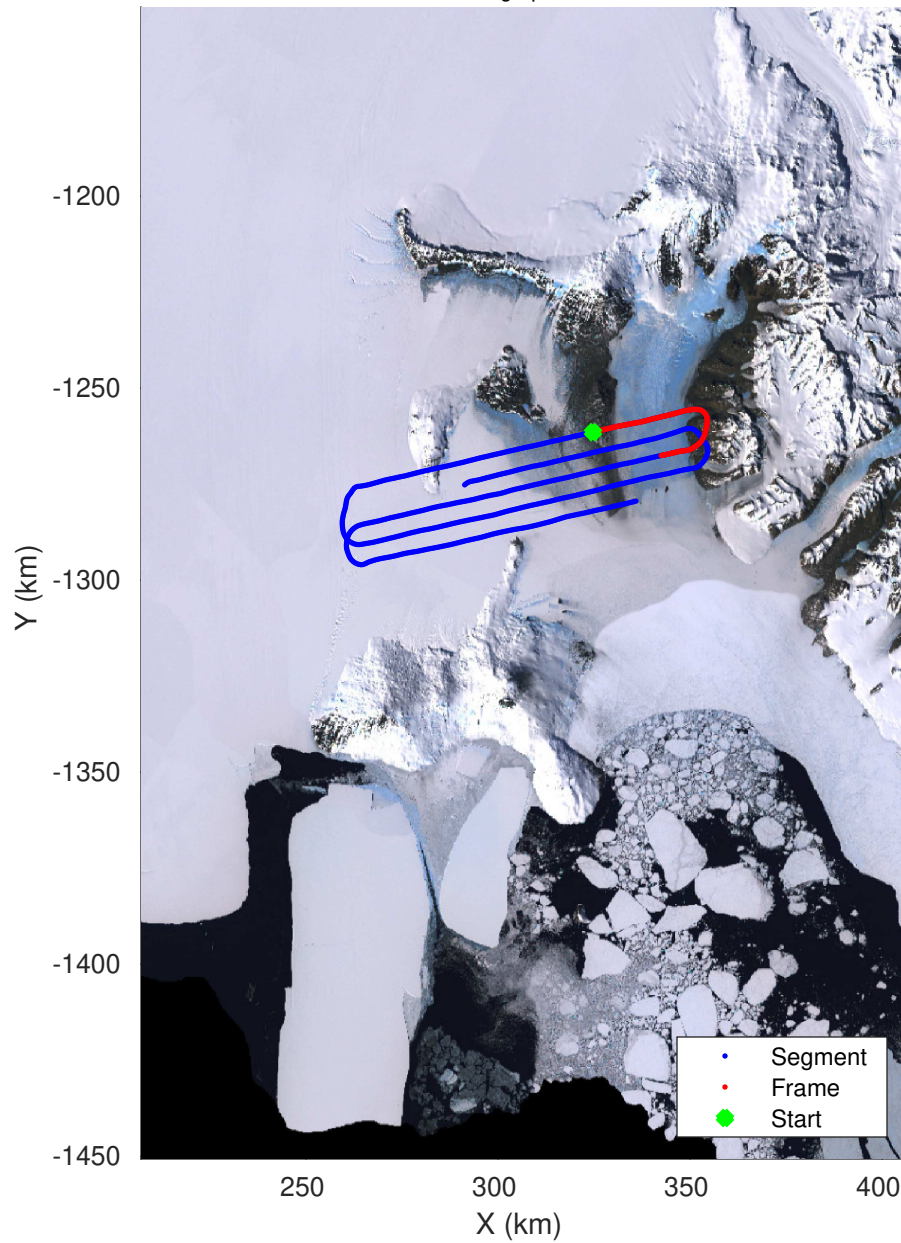
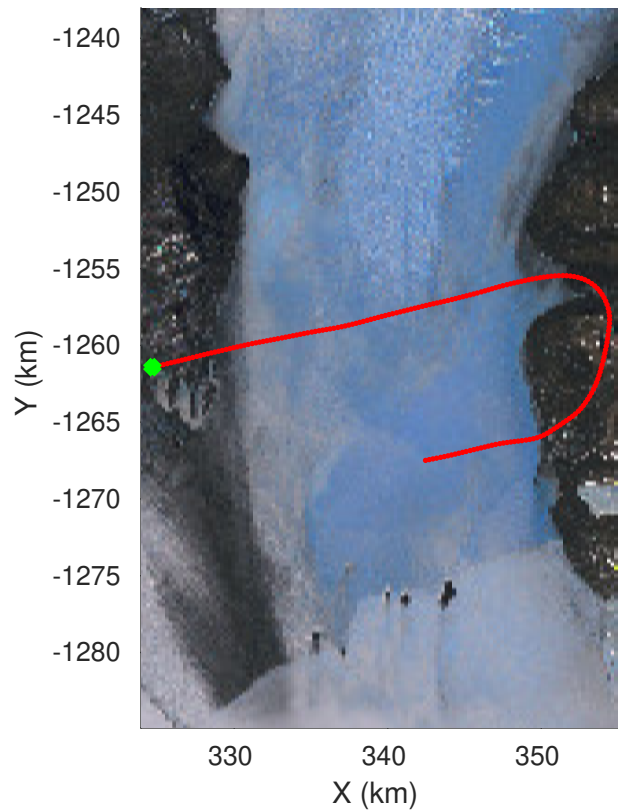
UTIG MARFA -- COLDEX

rds 2022_Antarctica_BaslerMKB: "F03: McMurdo Test Flight" 20221213_01_005: 01:40:21.2 to 01:51:02.8 GPS



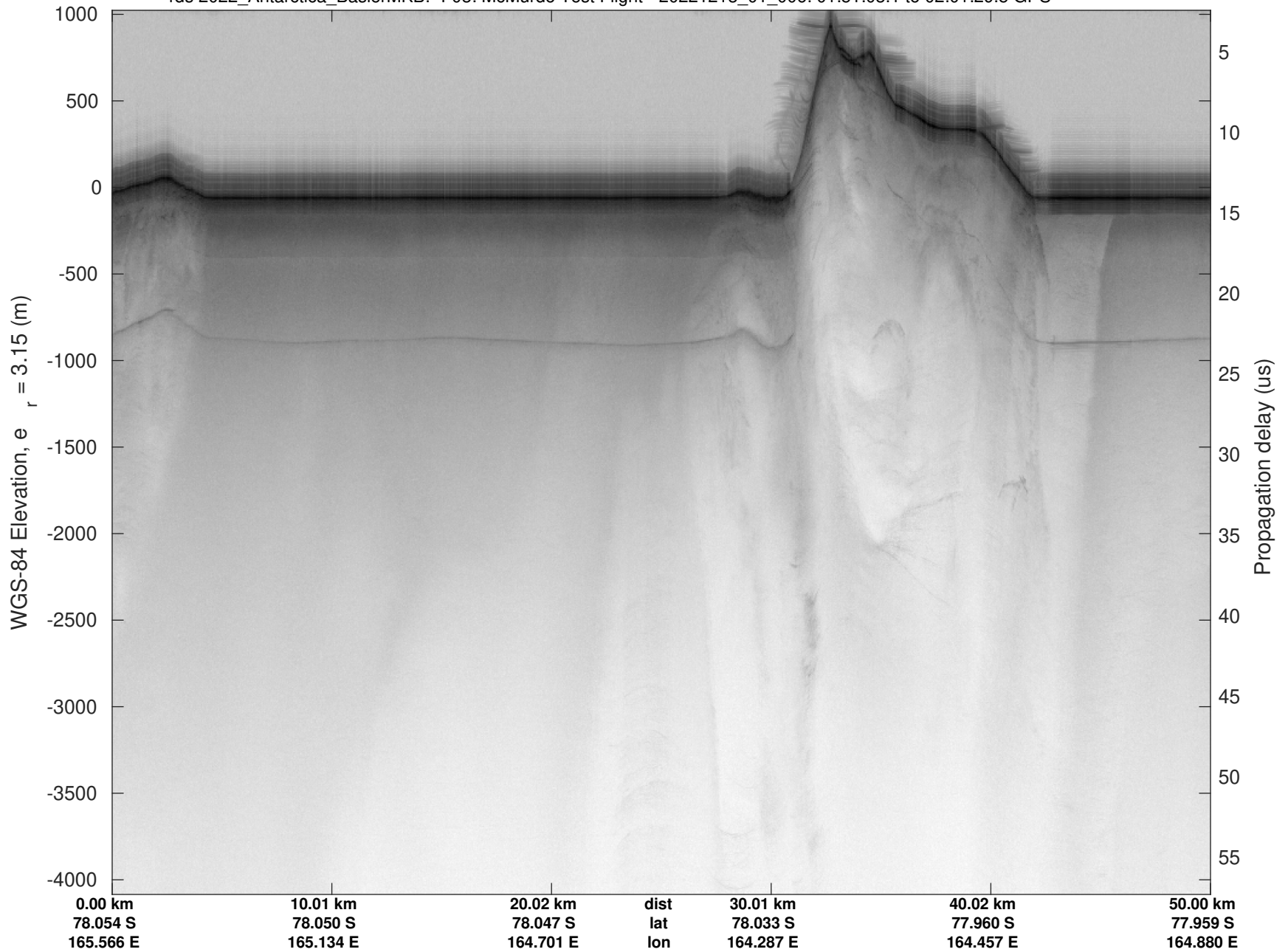


F03: McMurdo Test Flight
 20221213_01_006
 Polar Stereograph -71N/0E



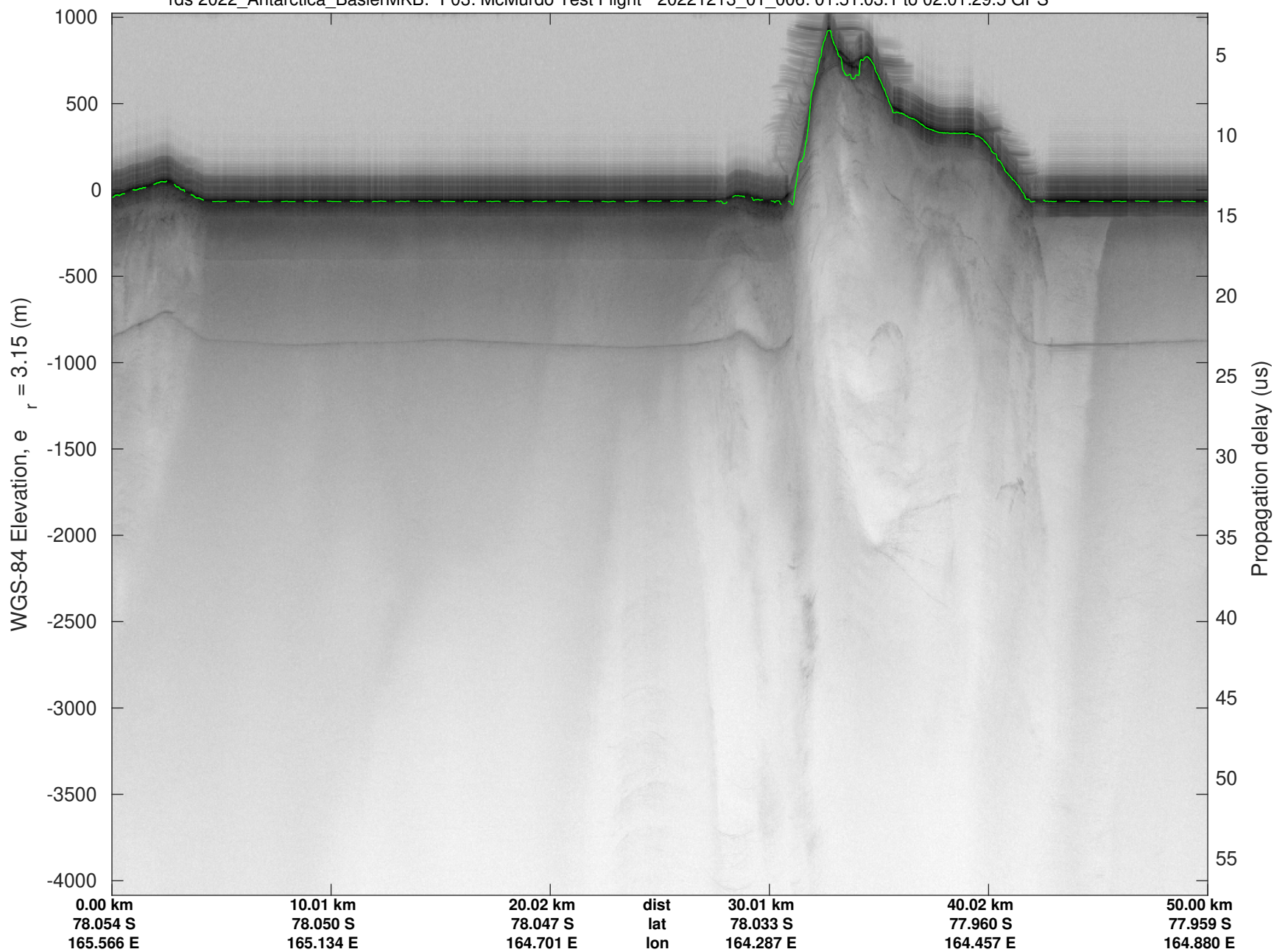
UTIG MARFA -- COLDEX

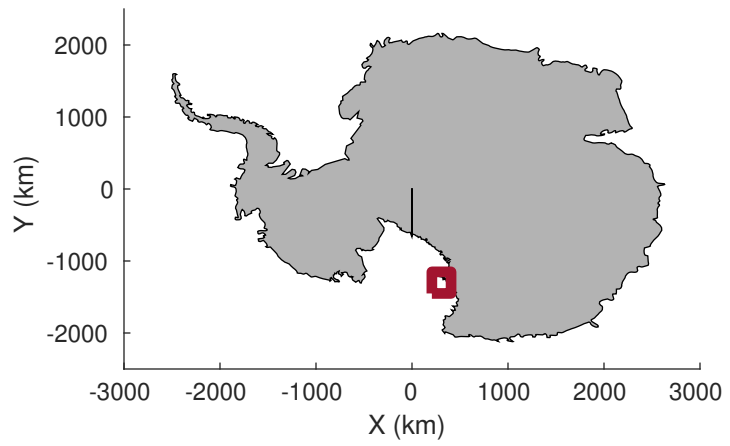
rds 2022_Antarctica_BaslerMKB: "F03: McMurdo Test Flight" 20221213_01_006: 01:51:03.1 to 02:01:29.5 GPS



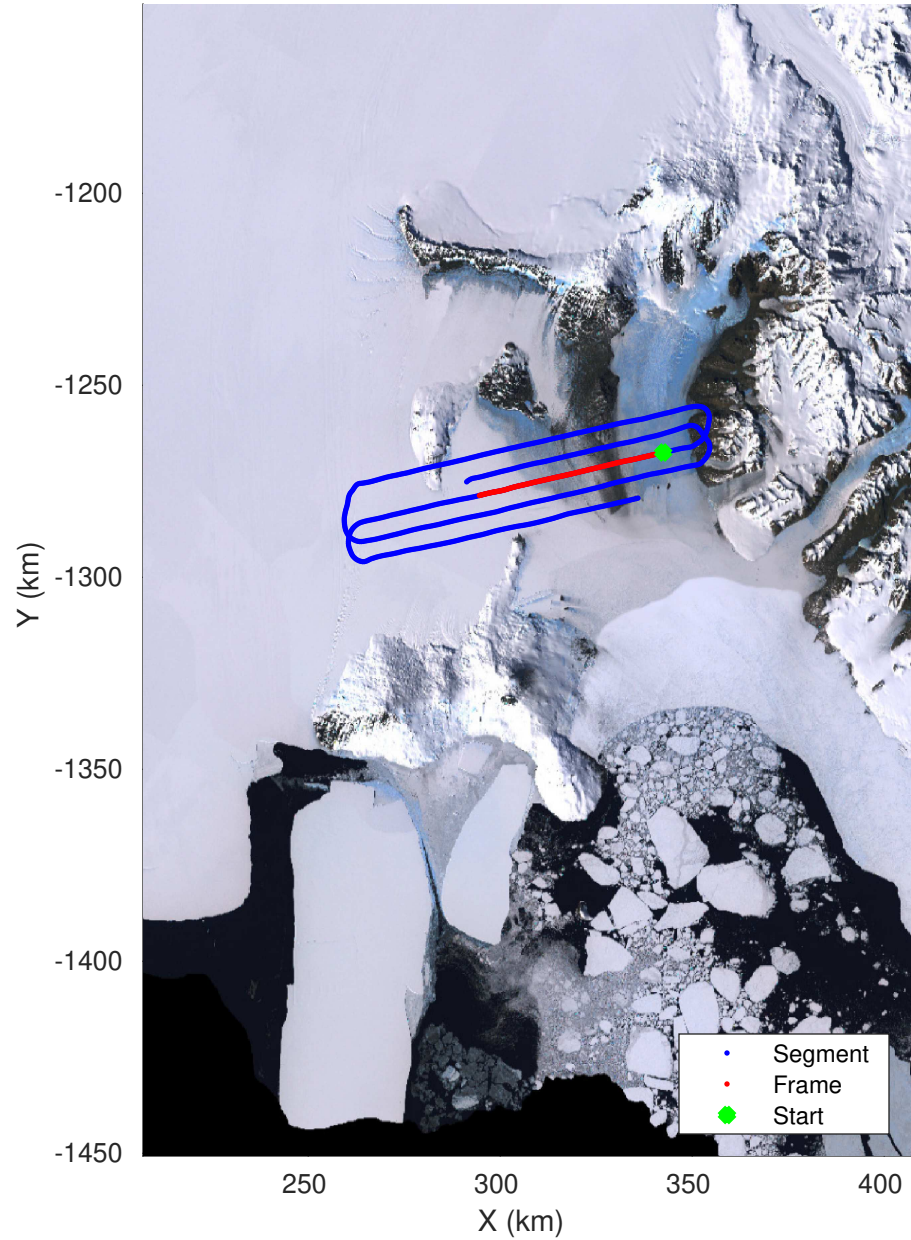
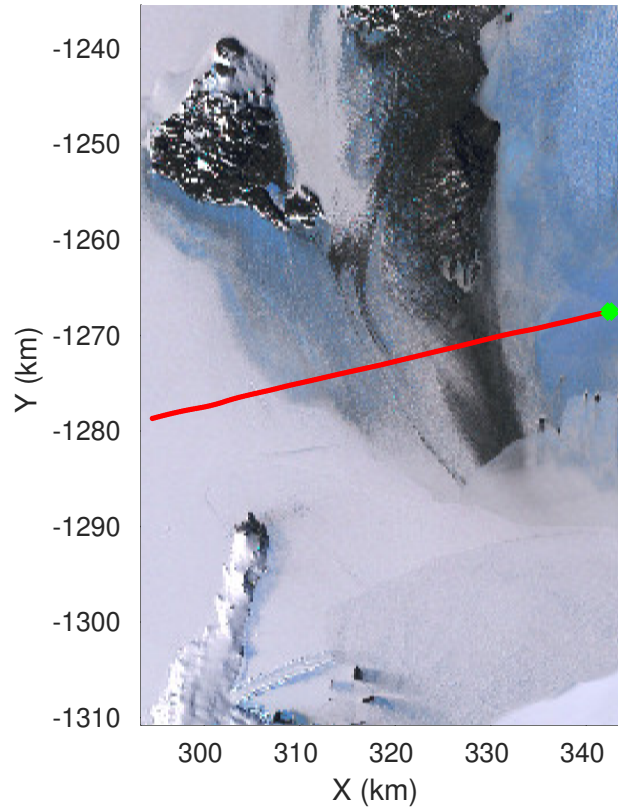
UTIG MARFA -- COLDEX

rds 2022_Antarctica_BaslerMKB: "F03: McMurdo Test Flight" 20221213_01_006: 01:51:03.1 to 02:01:29.5 GPS



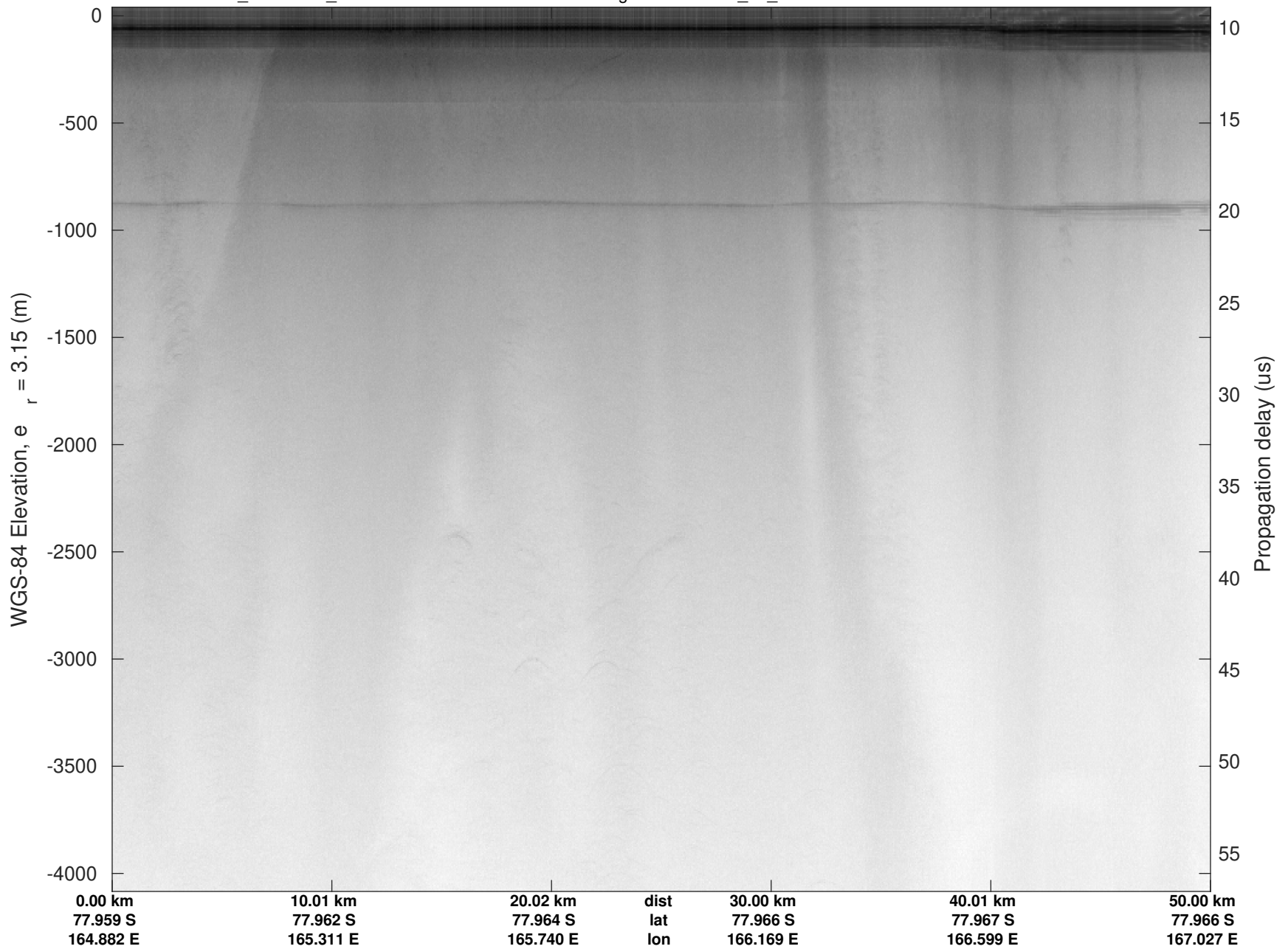


F03: McMurdo Test Flight
20221213_01_007
Polar Stereograph -71N/0E



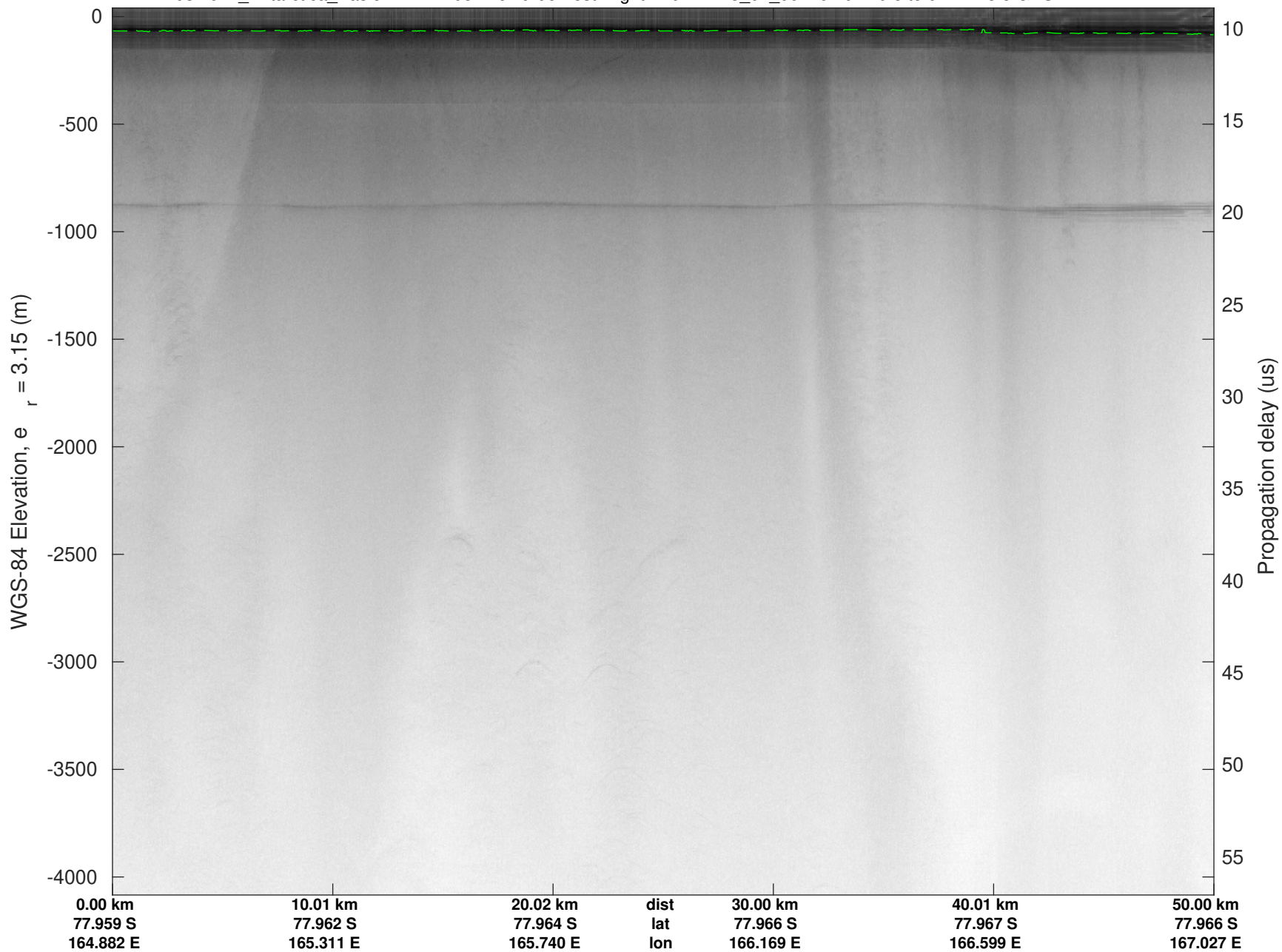
UTIG MARFA -- COLDEX

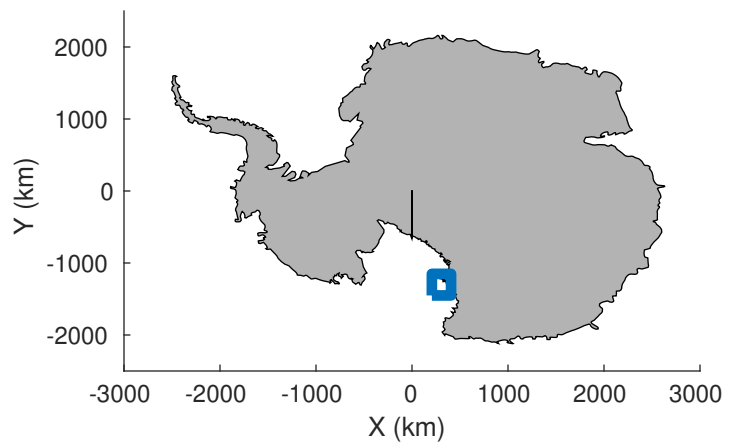
rds 2022_Antarctica_BaslerMKB: "F03: McMurdo Test Flight" 20221213_01_007: 02:01:29.8 to 02:11:28.8 GPS



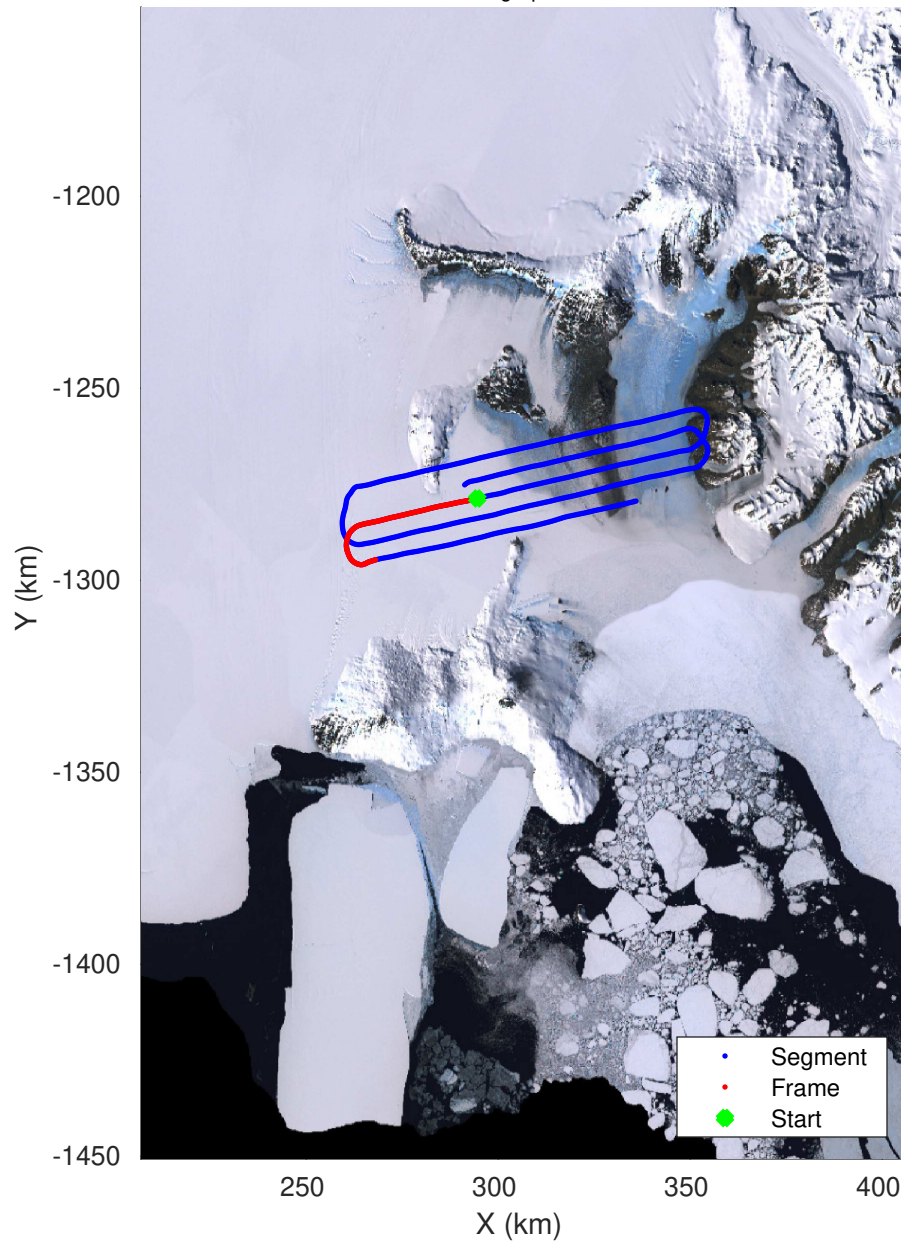
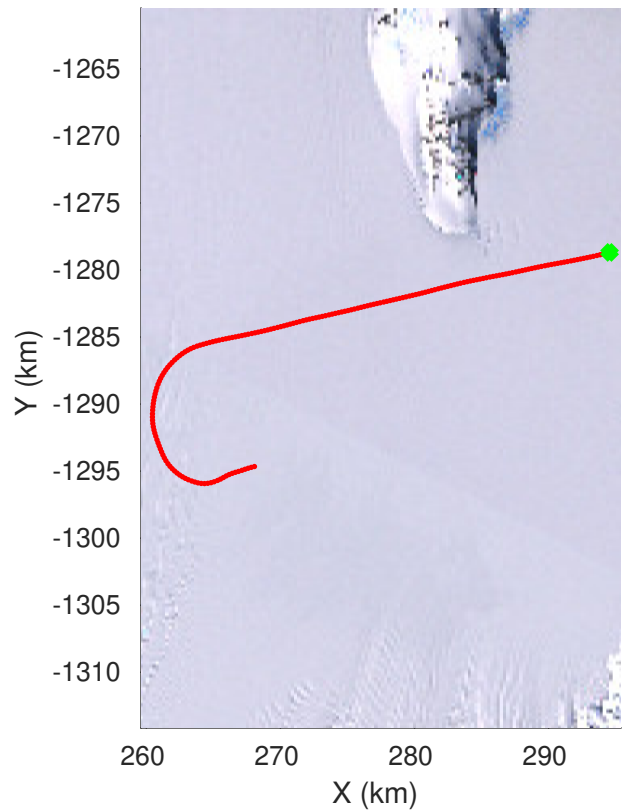
UTIG MARFA -- COLDEX

rds 2022_Antarctica_BaslerMKB: "F03: McMurdo Test Flight" 20221213_01_007: 02:01:29.8 to 02:11:28.8 GPS



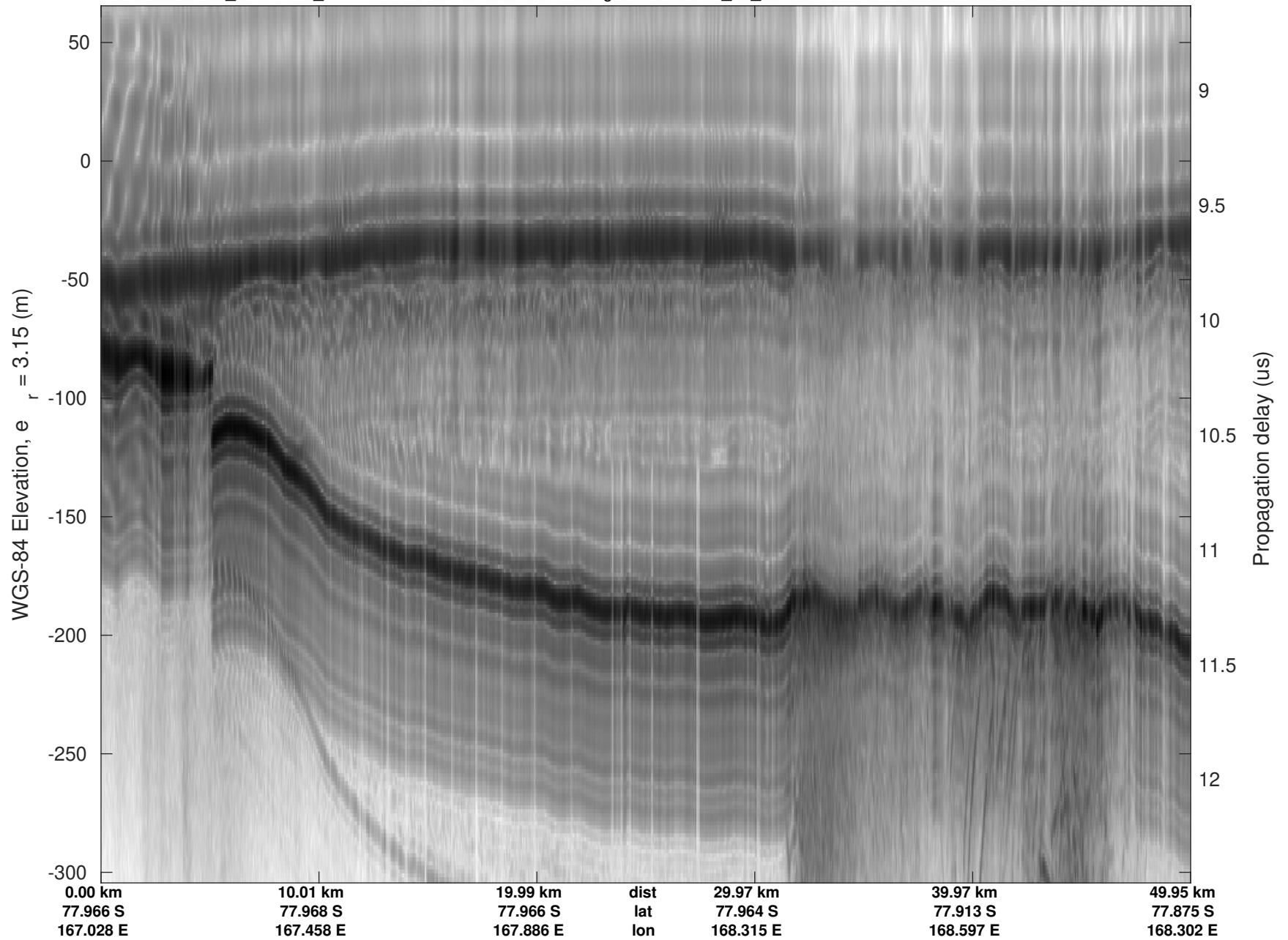


F03: McMurdo Test Flight
20221213_01_008
Polar Stereograph -71N/0E



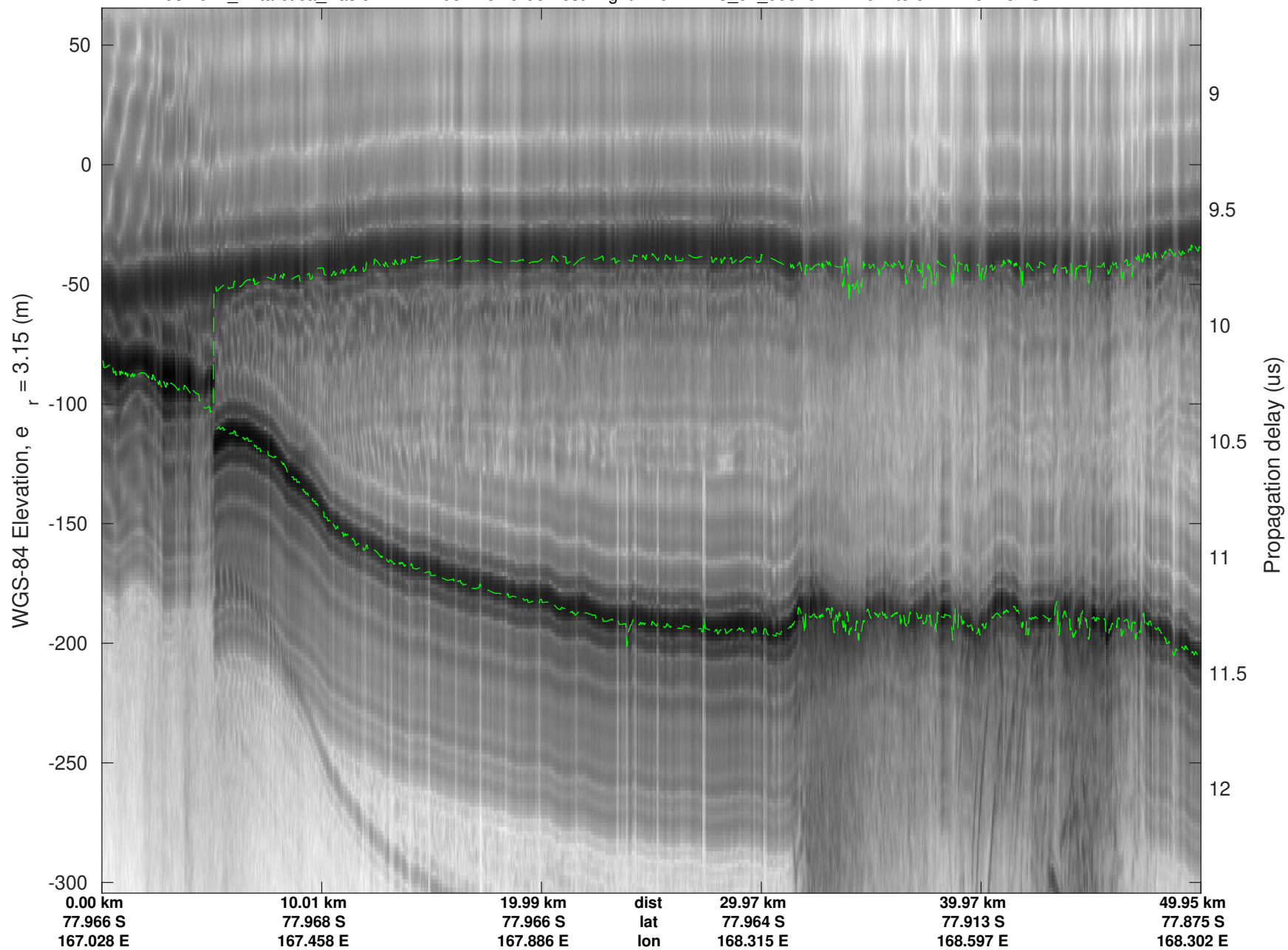
UTIG MARFA -- COLDEX

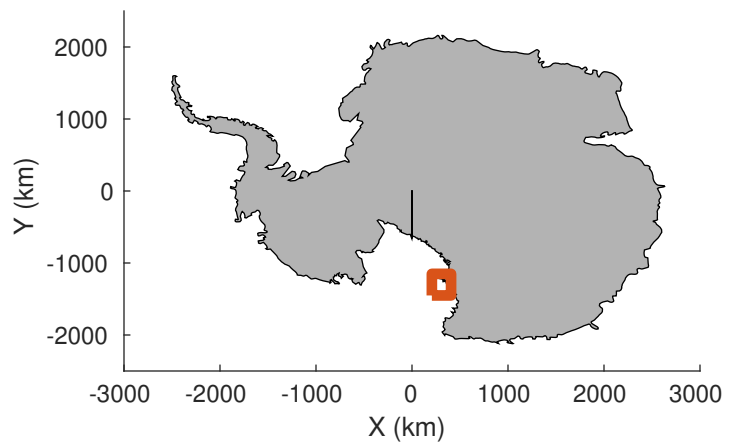
rds 2022_Antarctica_BaslerMKB: "F03: McMurdo Test Flight" 20221213_01_008: 02:11:29.1 to 02:21:28.1 GPS



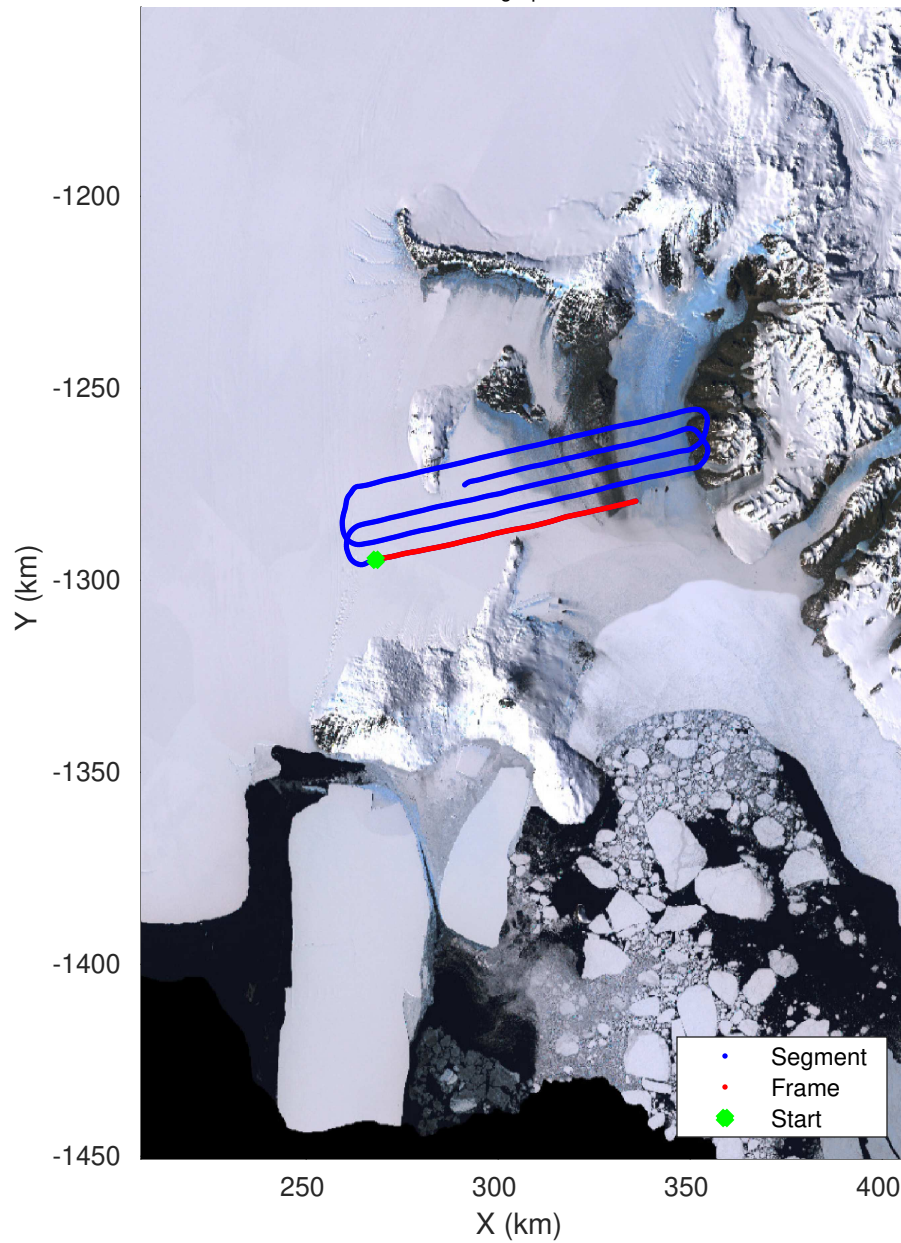
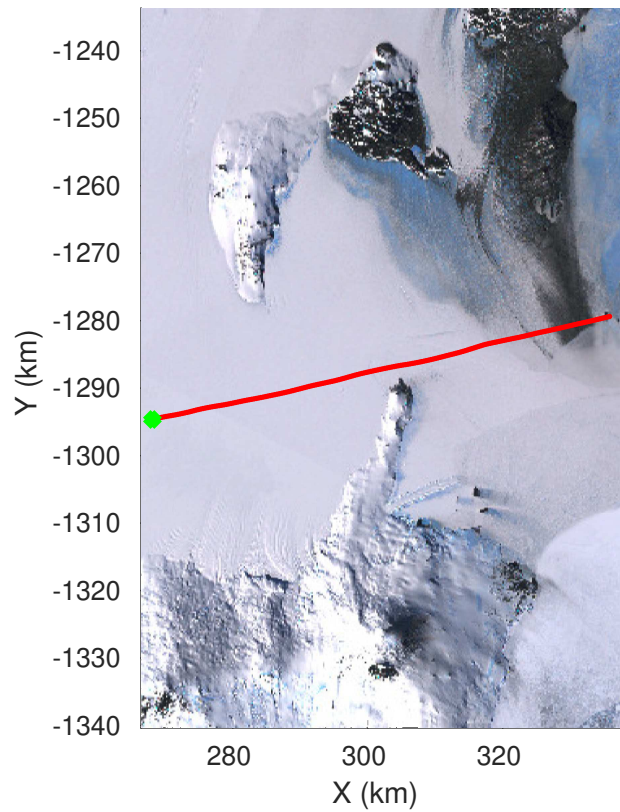
UTIG MARFA -- COLDEX

rds 2022_Antarctica_BaslerMKB: "F03: McMurdo Test Flight" 20221213_01_008: 02:11:29.1 to 02:21:28.1 GPS



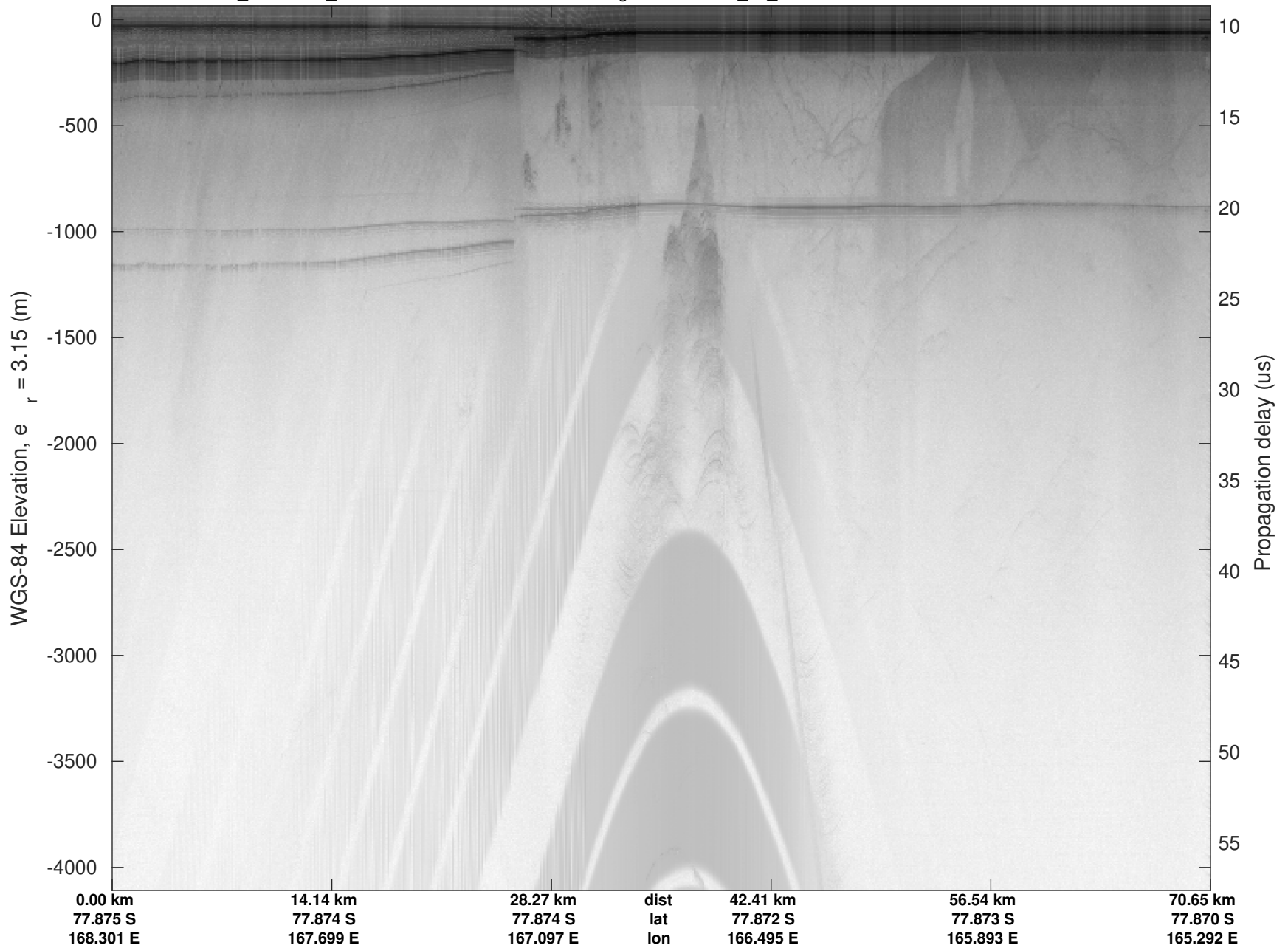


F03: McMurdo Test Flight
20221213_01_009
Polar Stereograph -71N/0E



UTIG MARFA -- COLDEX

rds 2022_Antarctica_BaslerMKB: "F03: McMurdo Test Flight" 20221213_01_009: 02:21:28.5 to 02:36:30.5 GPS



UTIG MARFA -- COLDEX

rds 2022_Antarctica_BaslerMKB: "F03: McMurdo Test Flight" 20221213_01_009: 02:21:28.5 to 02:36:30.5 GPS

