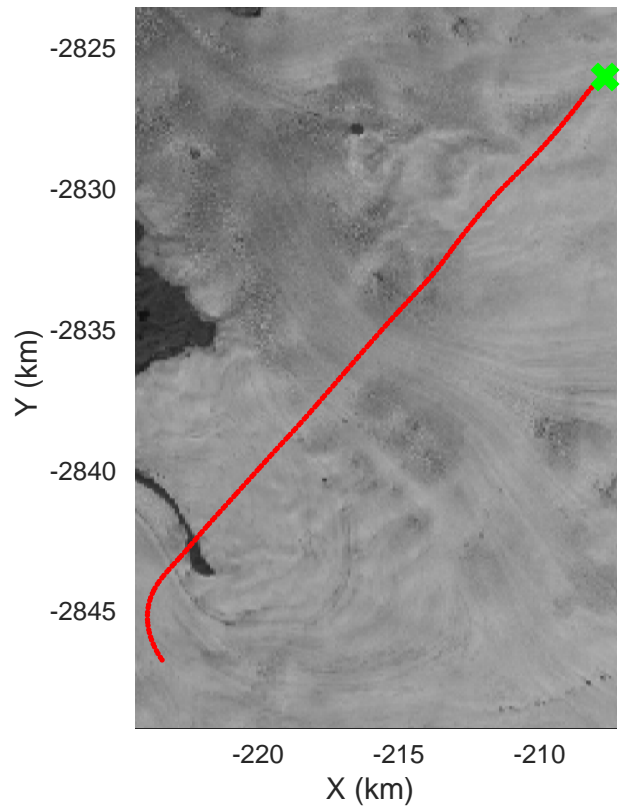
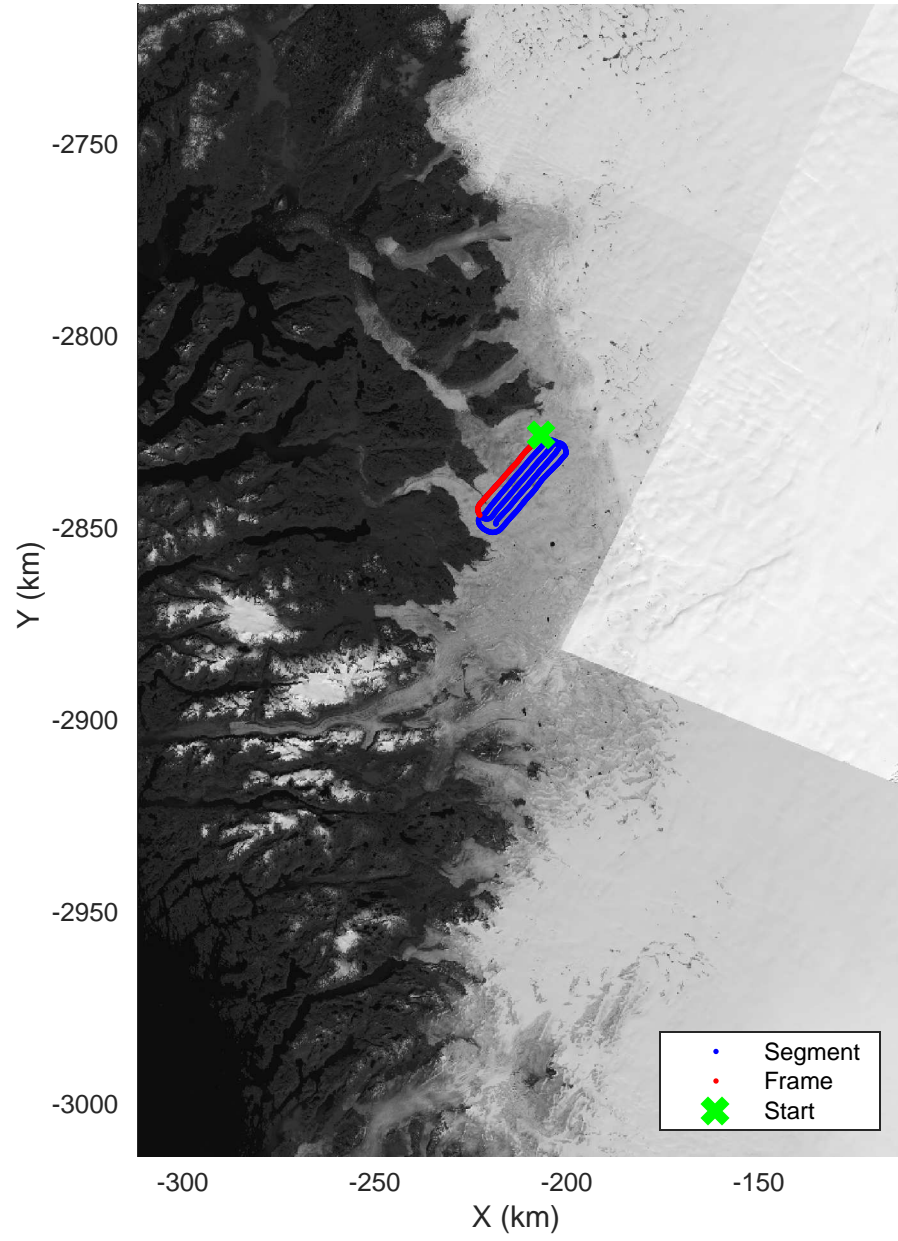
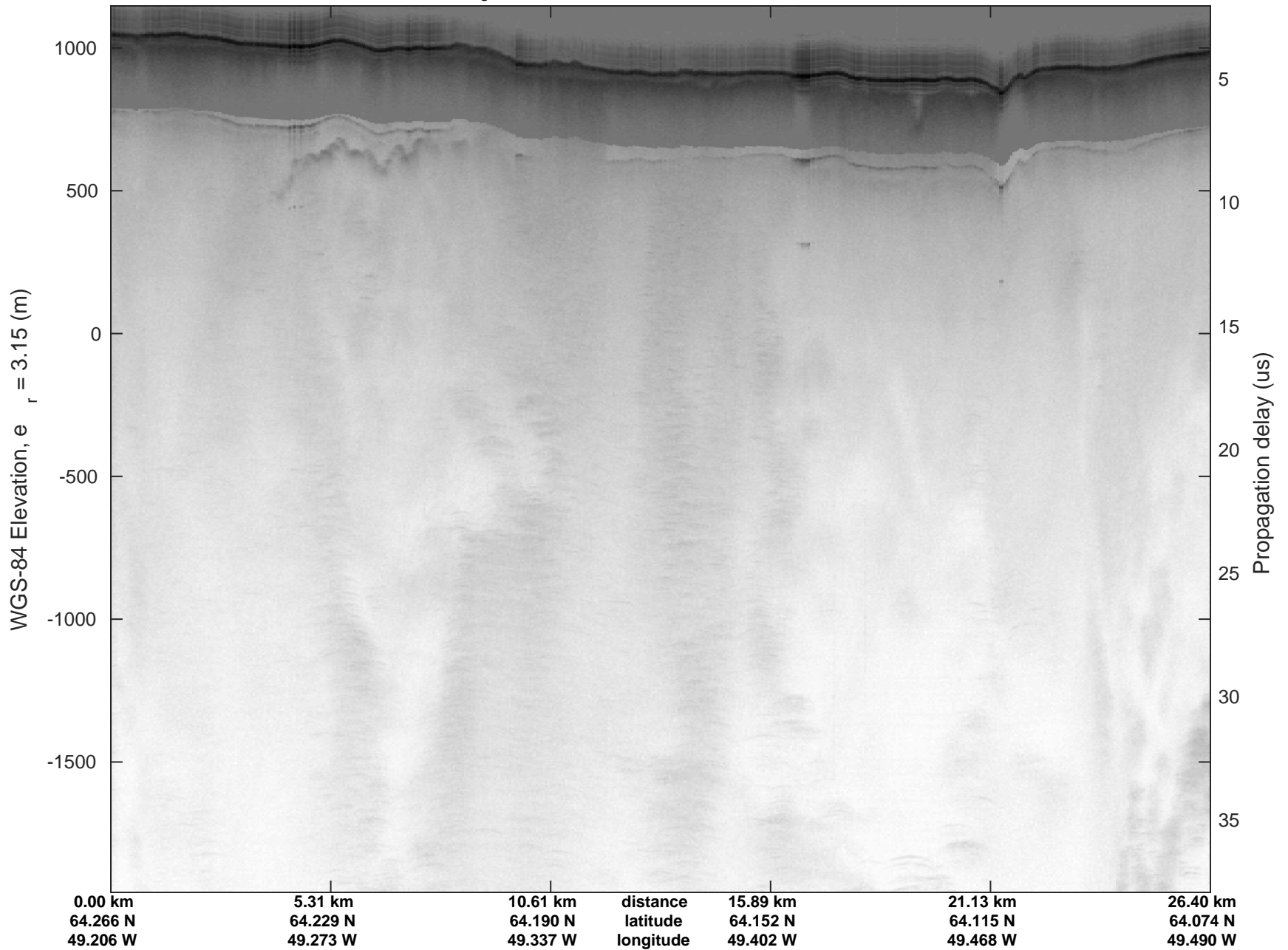
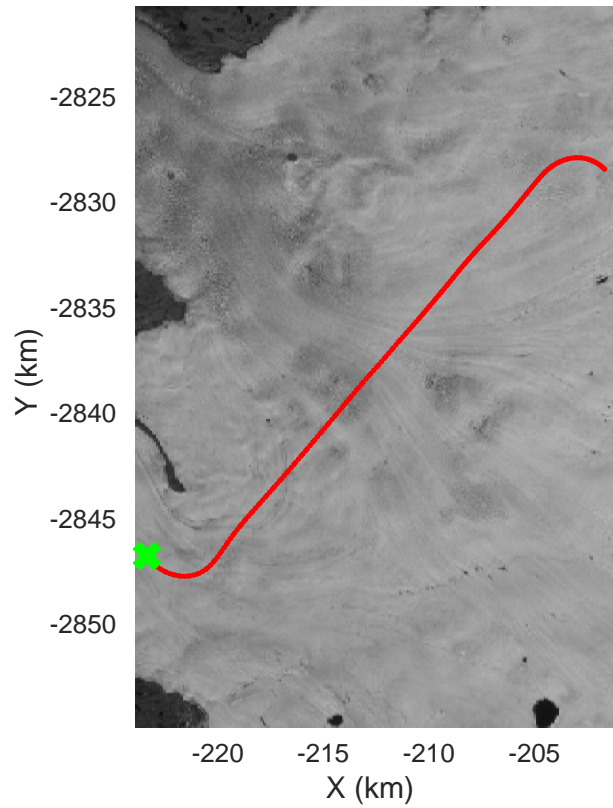
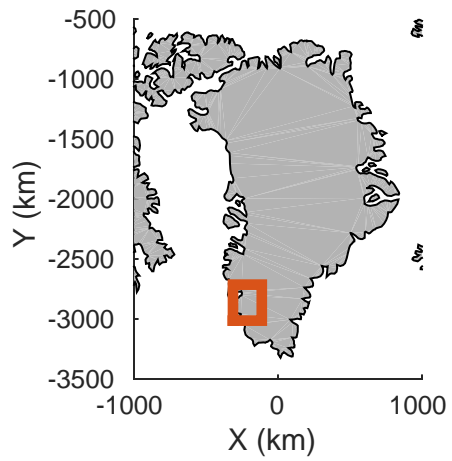


Kangiata Nunata Sermia
20160418_21_001
Polar Stereograph 70N/-45E

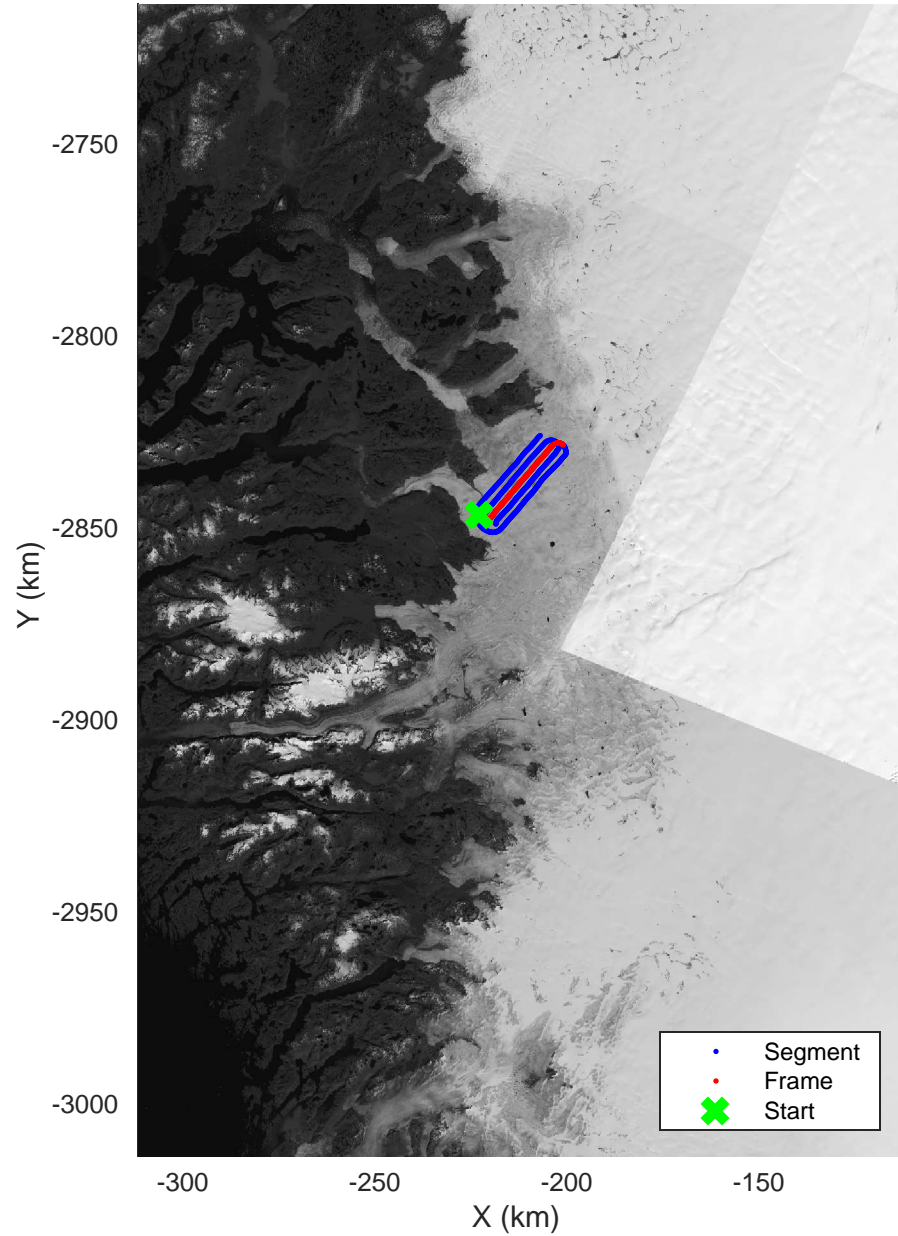


mcords5 2016_Greenland_Polar6: "Kangiata Nunata Sermia" 20160418_21_001: 12:40:57.7 to 12:46:30.6 GPS

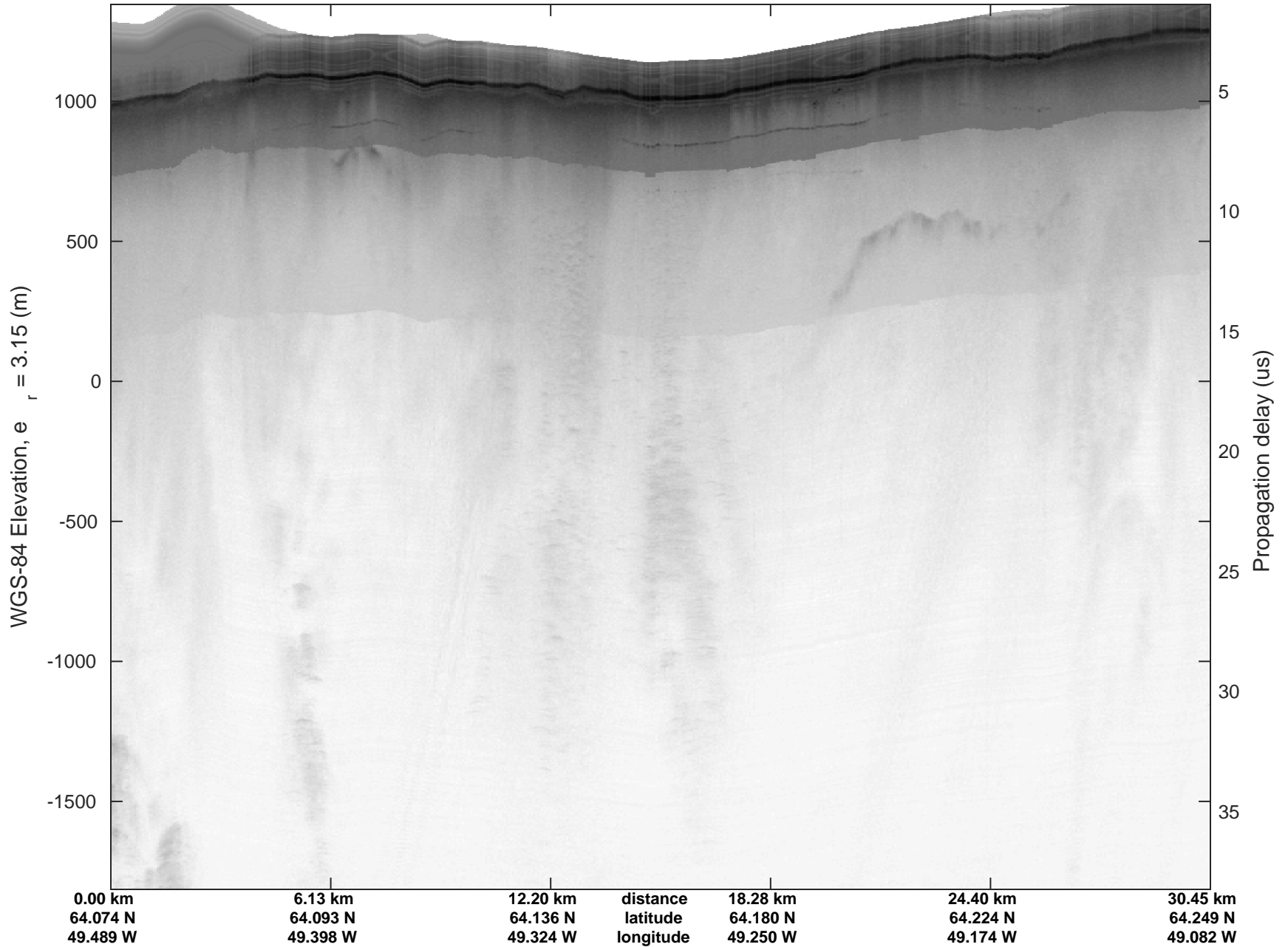


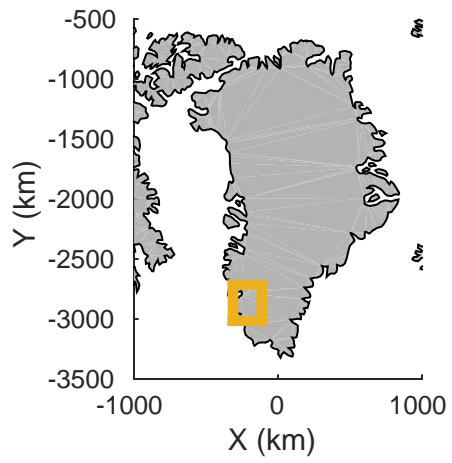


Kangiata Nunata Sermia
 20160418_21_002
 Polar Stereograph 70N/-45E

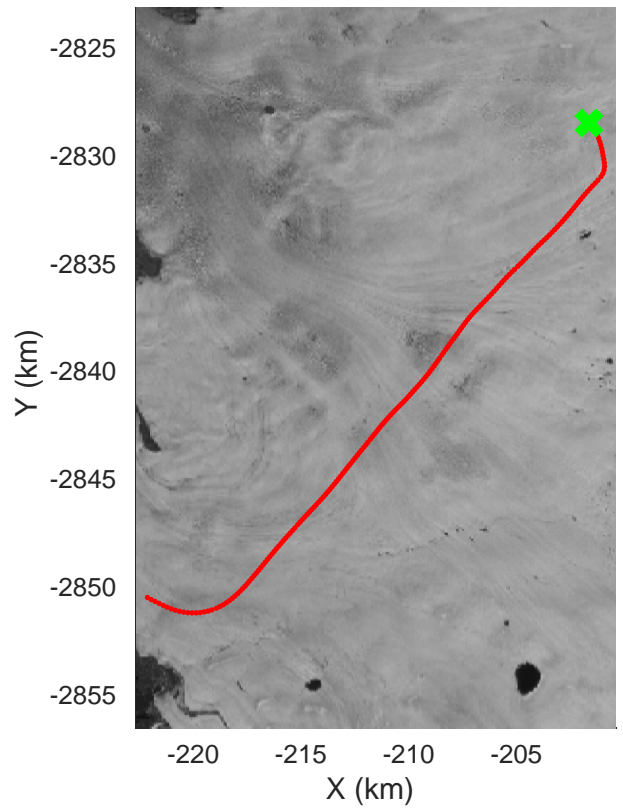
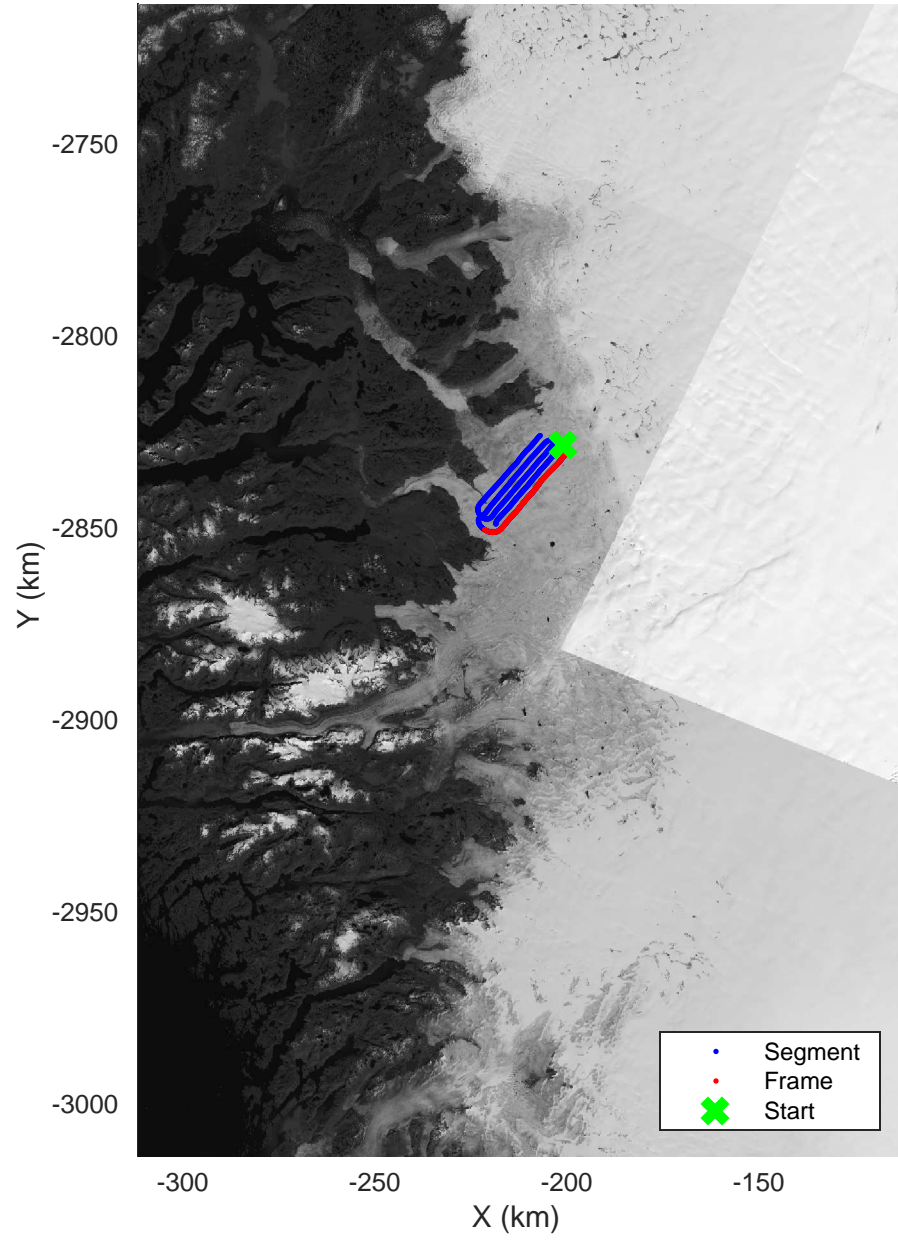


mcords5 2016_Greenland_Polar6: "Kangiata Nunata Sermia" 20160418_21_002: 12:46:31.3 to 12:52:31.3 GPS

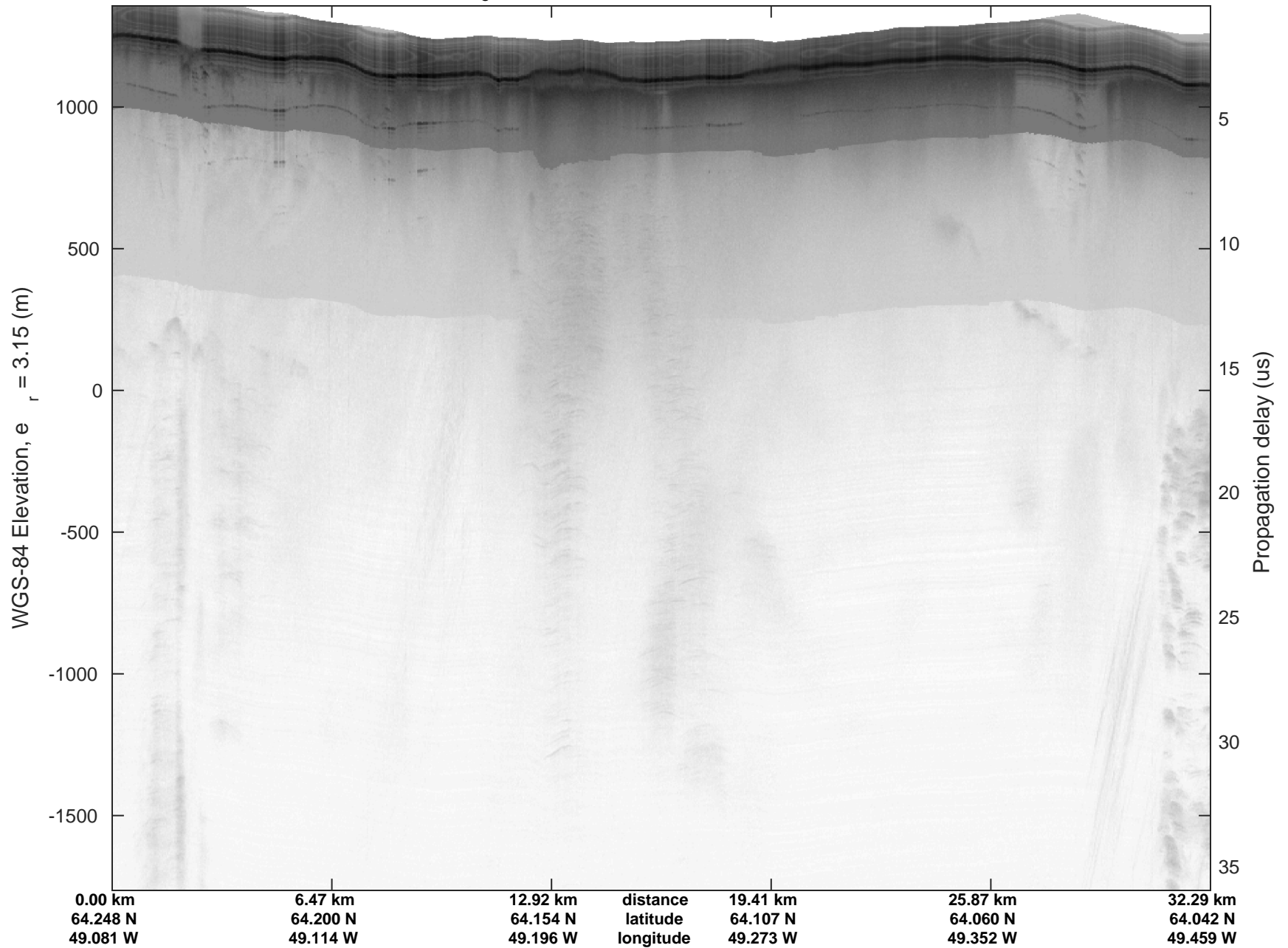


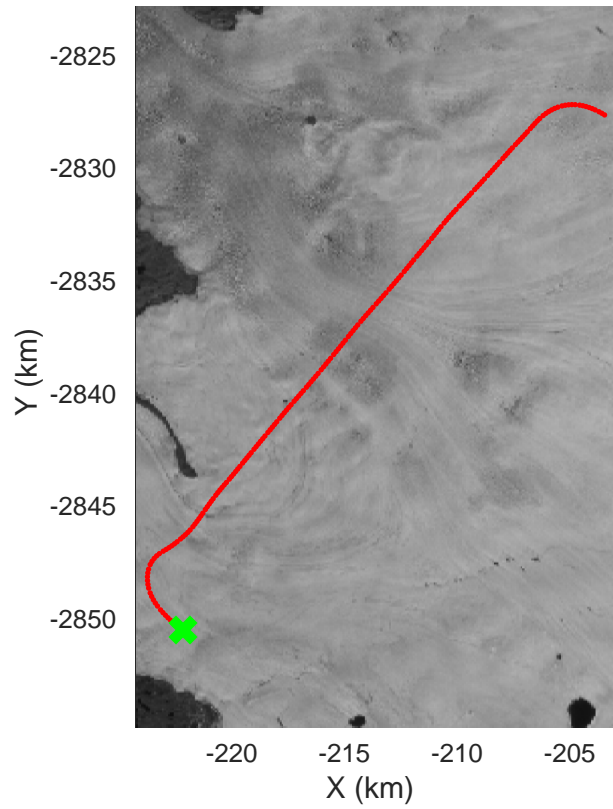
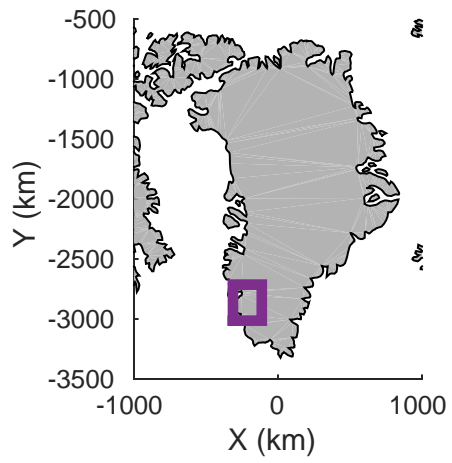


Kangiata Nunata Sermia
20160418_21_003
Polar Stereograph 70N/-45E

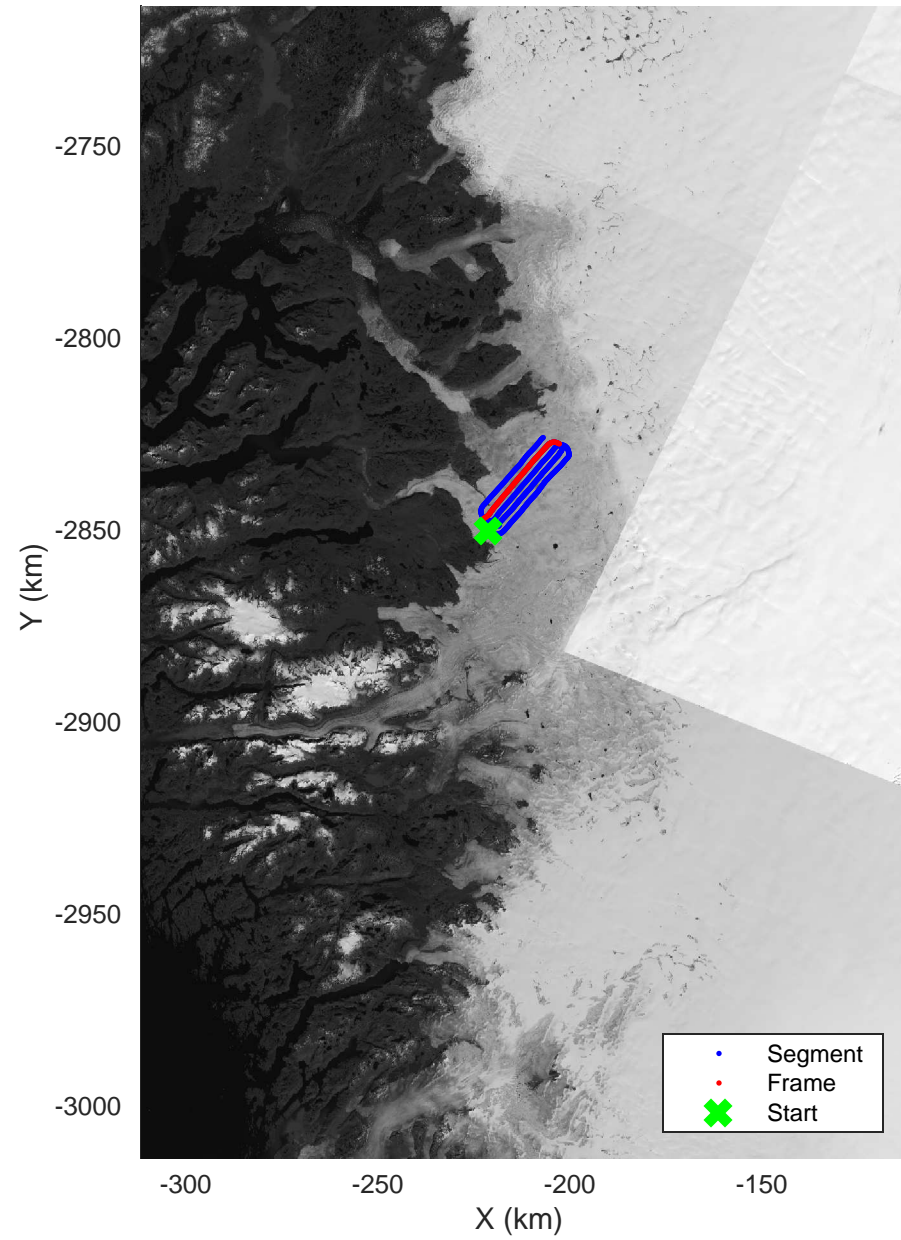


mcords5 2016_Greenland_Polar6: "Kangiata Nunata Sermia" 20160418_21_003: 12:52:32.4 to 13:01:39.1 GPS

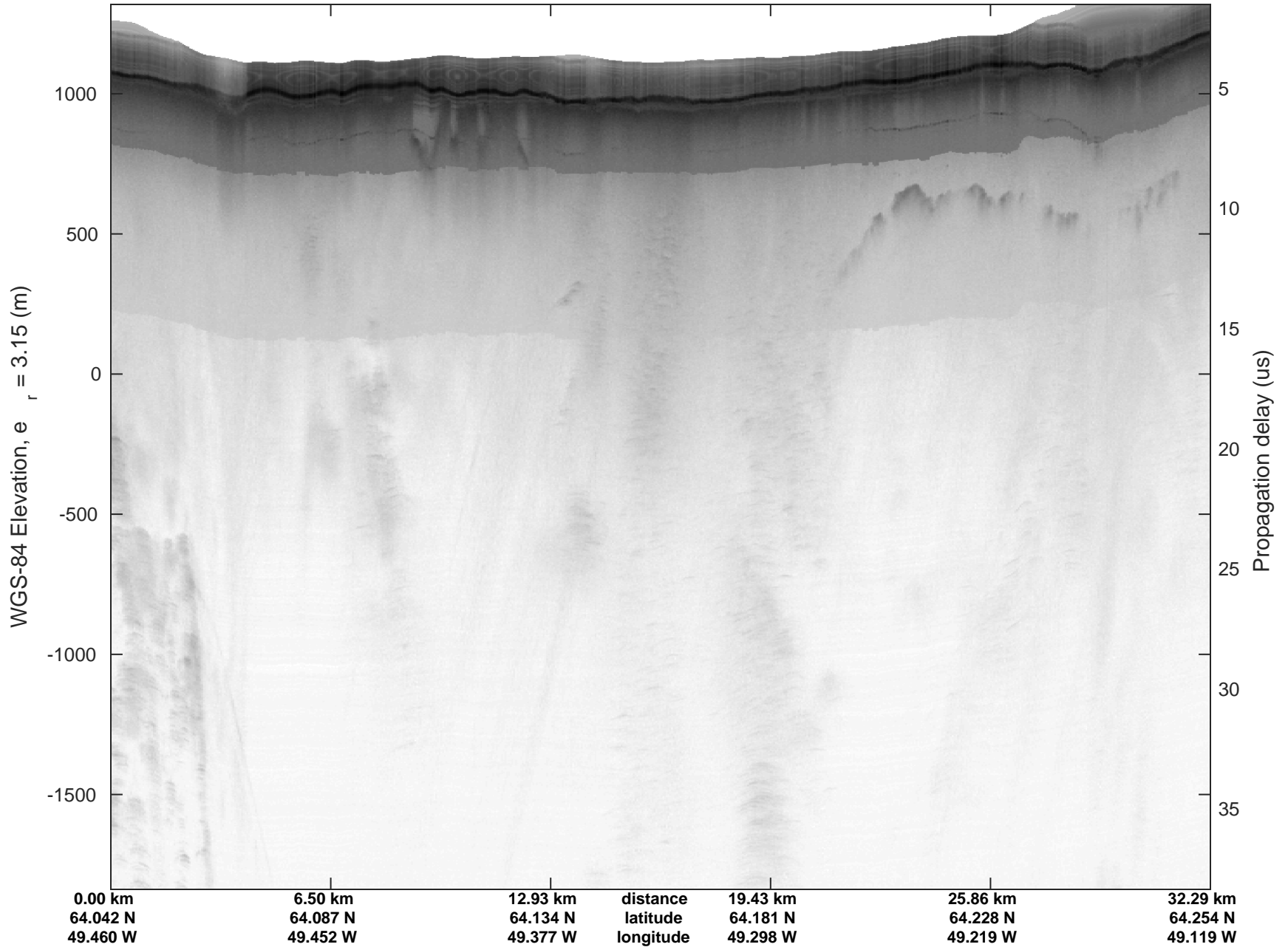


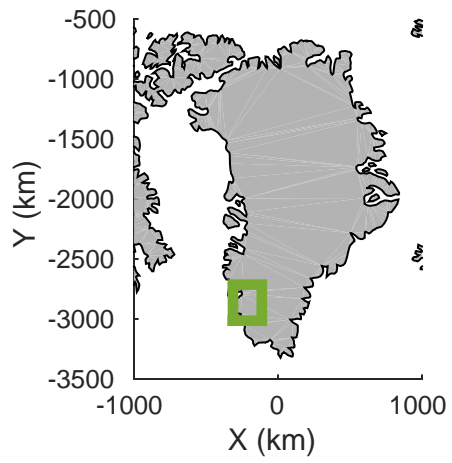


Kangiata Nunata Sermia
20160418_21_004
Polar Stereograph 70N/-45E

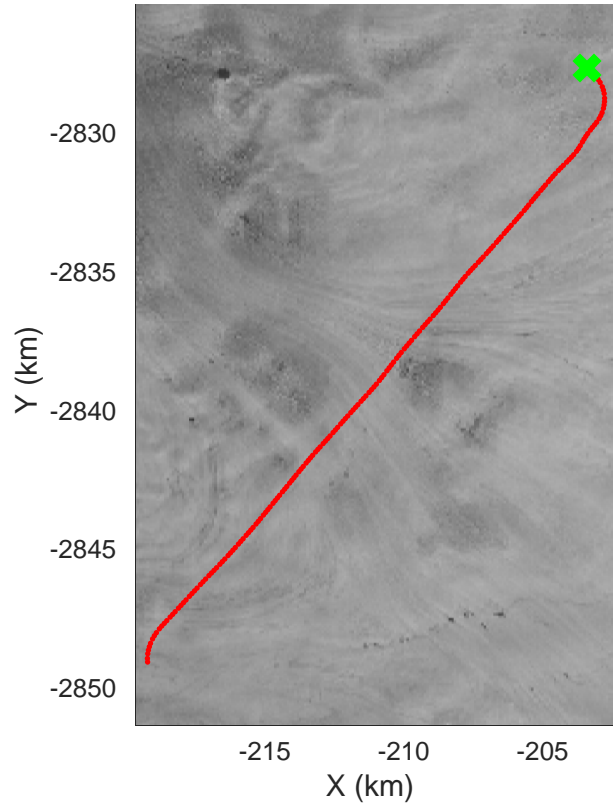
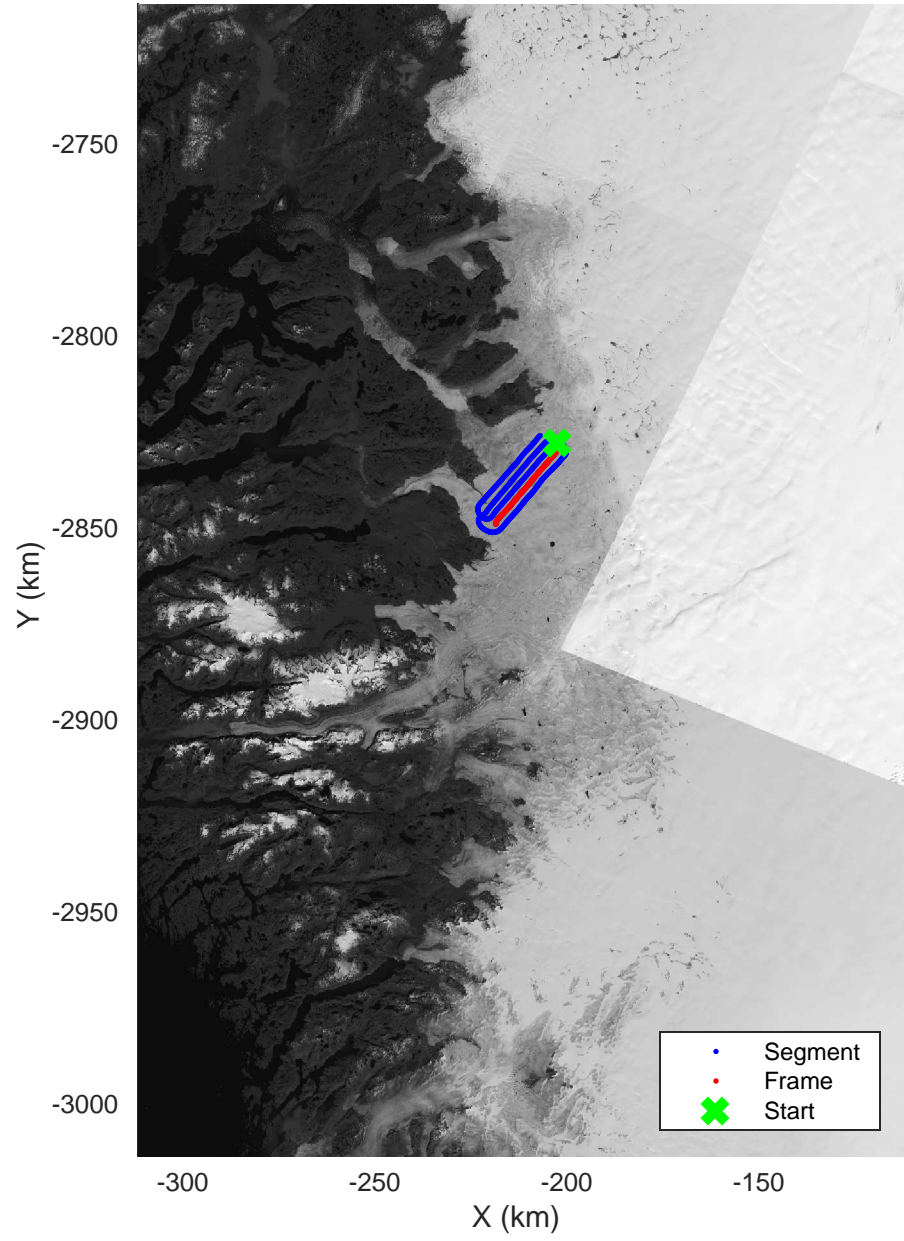


mcords5 2016_Greenland_Polar6: "Kangiata Nunata Sermia" 20160418_21_004: 13:01:39.9 to 13:08:51.5 GPS





Kangiata Nunata Sermia
 20160418_21_005
 Polar Stereograph 70N/-45E



mconds5 2016_Greenland_Polar6: "Kangiata Nunata Sermia" 20160418_21_005: 13:08:52.4 to 13:16:17.5 GPS

