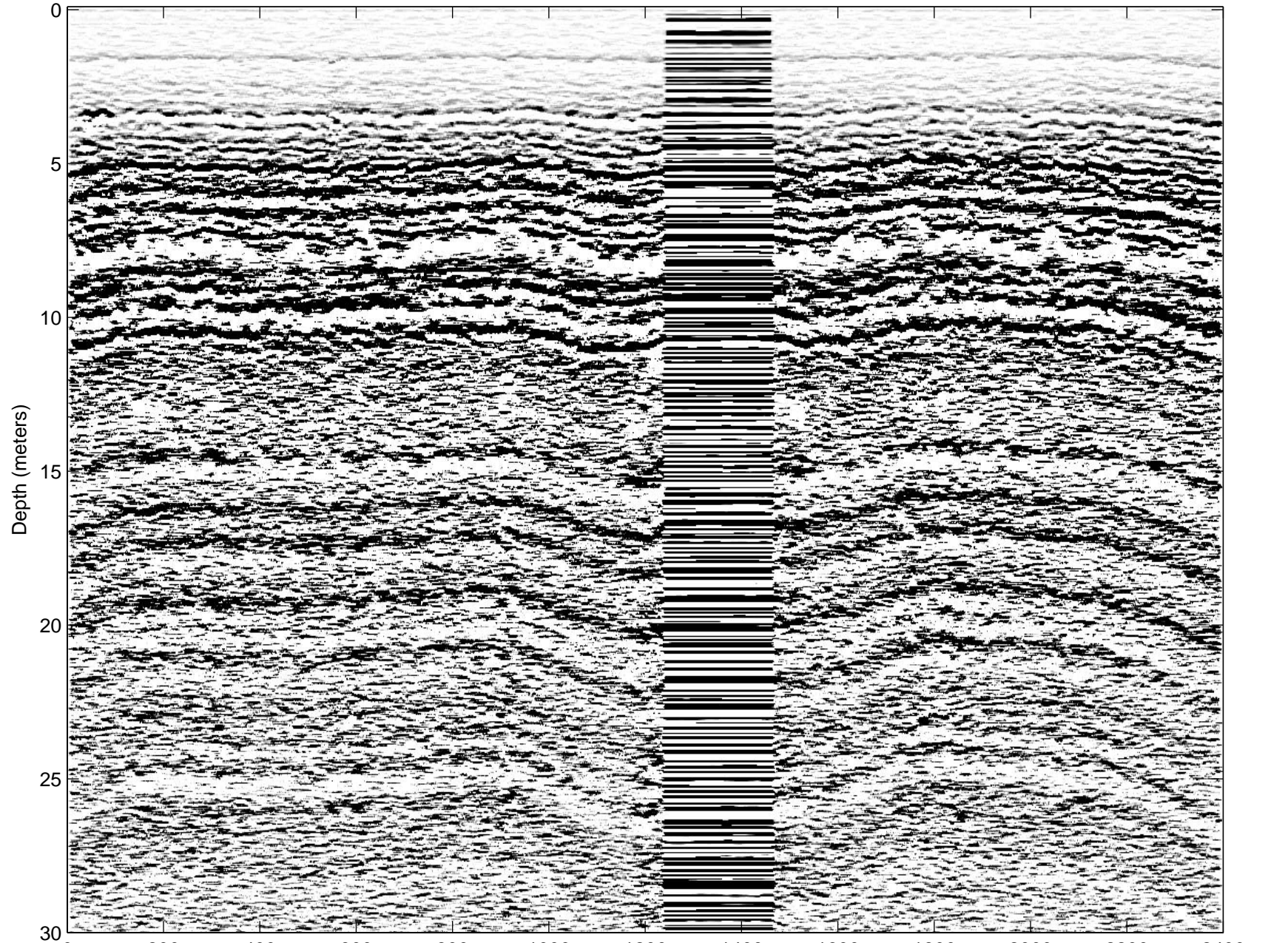


0.5–2 GHz Radar



0	200	400	600	800	1000	1200	1400	1600	1800	2000	2200	2400
81.2788N	81.2842N	81.29N	81.2917N	81.2865N	81.2808N	81.2748N	81.2743N	81.278N	81.2837N	81.2893N	81.2921N	81.2927N
15.6929W	15.6518W	15.6078W	15.5849W	15.6254W	15.6688W	15.7137W	15.7087W	15.6805W	15.6376W	15.5955W	15.5974W	15.6545W
0.0 m	919.7 m	1901.9 m	2324.6 m	1425.9 m	463.6 m	562.1 m	561.6 m	224.7 m	1084.0 m	2016.6 m	2194.4 m	1686.8 m